

ARIZONA

MOTOR VEHICLE CRASH FACTS

2022



2022 Motor Vehicle Crash Facts for the State of Arizona

*Prepared by:
The Arizona Department of Transportation
Transportation Systems Management and Operations*

Publication Date: July 24, 2023



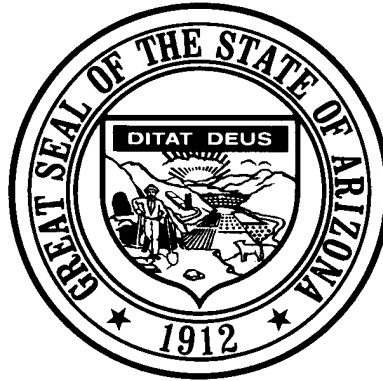
This publication is an annual statistical review of the motor vehicle crashes in the State of Arizona for the calendar year 2022. The results are compiled from Arizona Traffic Crash Reports submitted to the Arizona Department of Transportation by state, county, city, tribal, and other law enforcement agencies. Specific inquiries regarding the data in this report should be directed to:

**The Arizona Department of Transportation
Transportation Systems Management and Operations
Traffic Safety Section
1615 West Jackson Street
Phoenix, AZ 85007**

E-mail: azcrashfacts@azdot.gov

In order to provide the most current information, preliminary data is utilized when necessary. For this reason, previous or future reports may differ slightly and we encourage you to refer to the latest issue of Motor Vehicle Crash Facts.

This issue as well as previous issues of this publication may be viewed and downloaded from the ADOT Web Site:
www.azdot.gov/crashfacts



Katie Hobbs
Governor

Arizona Department of Transportation

Jennifer Toth
Director

State Transportation Board

Gary Knight – District 6
Chairman

Richard Searle – District 3
Vice Chairman

Members

Jackie Meck – District 1
Jenn Daniels – District 1
Ted Maxwell – District 2
Jenny Howard – District 4
Jesse Thompson – District 5

OVERVIEW

Section 1: – Highlights and Historical Trends 1

Section 2: – Geographic Location..... 9

Section 3: – Crash Descriptions 17

Section 4: – Safety Devices 23

Section 5: – Motor Vehicle and Driver Descriptions 26

Section 6: – Alcohol Related Crashes..... 33

Section 7: – Pedestrian and Bicycle Crashes 42

Section 8: – Motorcycle (MC) Crashes 48

Acknowledgements 58

2022 Arizona Crash Facts Summary

Table of Contents

Section 1: Highlights and Historical Trends	1
Arizona Crash Facts Summary and Comparison.....	2
Arizona at a Glance – 2022.....	2
Licensed Drivers, Motor Vehicle Registration and Crash History in Arizona.....	3
Historical Trends – VMT and Rates.....	3
Statewide Economic Loss Due to Motor Vehicle Crashes.....	4
State Adjusted Crash Costs.....	4
Traffic Crashes in Arizona by Year.....	5
Victims of Motor Vehicle Crashes.....	6
Suspected Serious Injuries by Person Type 2018-2022.....	6
Young Drivers (age 15-24) killed in crashes 2018-2022.....	6
State Highway System (SHS) vs Local Road Fatalities.....	7
Arizona Fatality Rate vs. Injury Rate.....	7
Traffic Fatalities by Geographic Region.....	7
Traffic Injuries by Geographic Region.....	7
Holiday Crash Statistics.....	8
Section 2: Geographic Location	9
Crash Severity by First Harmful Event Statewide.....	10
Crashes by County.....	10
Crash Severity by First Harmful Event in Urban Areas.....	11
Crash Severity by First Harmful Event in Rural Areas.....	11
Analysis by Jurisdiction.....	12
Total Fatalities by County for 2021 and 2022.....	15
Urban and Rural Crashes by Day of Week.....	16
Urban and Rural Fatal Crashes by Day of Week.....	16
All Urban and Rural Crashes vs. Urban and Rural Fatal Crashes by Month.....	16
Section 3: Crash Descriptions	17
Manner of Collision in Multi-Unit Crashes.....	18
Lighting Conditions.....	18
Weather Conditions.....	18
Road Surface Conditions.....	19
Roadway Grade.....	19
Roadway Alignment.....	19
All Crashes vs. Fatal Crashes by Time of Day - Weekdays.....	20
All Crashes vs. Fatal Crashes by Time of Day - Weekends.....	20
Crashes by Day of Week.....	21
Fatal Crashes by Day of Week.....	21
All Crashes vs. Fatal Crashes by Month.....	21
Crashes by Hour and Day of Week.....	22
Section 4: Safety Devices	23
Child Safety Device Usage (less than five years old).....	24
Driver Safety Device Usage.....	24
Passenger Safety Device Usage.....	24
Driver Safety Device Usage by Gender.....	25
Driver Safety Device Usage by Age.....	25

2022 Arizona Crash Facts Summary

Section 5: Motor Vehicle and Driver Descriptions.....	26
Arizona Motor Vehicle Registrations.....	27
Motor Vehicle Crash Involvement by Vehicle Type.....	27
Hit and Run Drivers Involved in Crashes.....	28
Gender of Drivers Involved in Crashes.....	28
License Status of Drivers Involved in Crashes.....	28
Passengers Killed and Injured by Age and Gender.....	28
Drivers and Passengers Killed and Injured by Vehicle Type.....	29
Drivers Killed and Injured by Age and Gender.....	29
Licensed Drivers in Arizona by Age.....	30
Driver Involvement by Age.....	30
Driver Violations.....	31
Driver Physical Condition.....	31
Distracted Driving Behavior.....	32
Secondary Crashes.....	32
Road Rage Crashes.....	32
Section 6: Alcohol Related Crashes.....	33
Economic Loss Due to Alcohol Related Crashes in Arizona for 2022.....	34
Alcohol Related Crash History.....	34
Manner of Collision in Alcohol Related Crashes.....	34
Alcohol Related Crashes by First Harmful Event.....	35
Alcohol Related Crashes by Vehicle Type.....	35
Lighting Conditions in Alcohol Related Crashes.....	36
Road Surface Conditions in Alcohol Related Crashes.....	36
Gender of Drivers Involved in Alcohol Related Crashes.....	36
Driver Involvement by Age in Alcohol Related Crashes.....	37
When Alcohol Related Crashes Occurred in 2022.....	37
Safety Device Usage for Drinking Drivers.....	37
Persons Killed and Injured in Alcohol Related Crashes.....	38
Alcohol Related Crashes by County.....	38
All Alcohol Related Crashes vs. Fatal Alcohol Related Crashes by Day of Week.....	39
All Alcohol Related Crashes vs. Fatal Alcohol Related Crashes by Month.....	39
All Alcohol Related Crashes vs. Fatal Alcohol Related Crashes - Weekdays.....	40
All Alcohol Related Crashes vs. Fatal Alcohol Related Crashes - Weekends.....	40
Alcohol Related Crashes by Hour and Day of Week.....	41
Section 7: Pedestrian and Bicycle Crashes.....	42
Pedestrians Killed and Injured By Age and Gender.....	43
Pedestrian Crashes by Geographic Location.....	43
Pedestrian Crash History.....	43
Pedestrians Killed by Age and Action.....	44
Pedestrians Injured by Age and Action.....	44
Pedestrian Physical Condition in Motor Vehicle Crashes.....	44
Lighting Conditions in Pedestrian Crashes.....	45
Weather Conditions in Pedestrian Crashes.....	45
Bicyclists Killed and Injured by Age and Gender.....	45
Bicycle Crashes by Geographic Location.....	46
Bicycle Crash History.....	46
Lighting Conditions in Bicycle Crashes.....	46
Weather Conditions in Bicycle Crashes.....	46
Pedestrian Crashes by County.....	47
Bicycle Crashes by County.....	47

2022 Arizona Crash Facts Summary

Section 8: Motorcycle (MC) Crashes	48
MC Fatalities by Year.....	49
MC Registrations in Arizona.....	49
Fatality Rate per Registered MC.....	49
Percent of MC Crashes to All Crashes.....	49
MC Crashes by First Harmful Event.....	50
Lighting Conditions in MC Crashes.....	50
Road Surface Conditions in MC Crashes.....	50
MC Crashes by Geographic Location.....	51
Operator Involvement by Age in MC Crashes.....	51
MC Operator Physical Condition.....	51
Helmet Use by Gender.....	52
MC Operator’s Helmet Use.....	52
MC Passenger’s Helmet Use.....	52
MC Operators and Passengers Killed and Injured.....	53
MC Operator Violations.....	53
All MC Crashes vs. Fatal MC Crashes by Time of Day - Weekdays.....	54
All MC Crashes vs. Fatal MC Crashes by Time of Day - Weekends.....	54
All MC Crashes vs. Fatal MC Crashes by Day of Week.....	55
Alcohol Related MC Crashes vs. Fatal Alcohol Related MC Crashes by Day of Week.....	55
MC Crashes by Hour and Day of Week.....	56
MC Crashes by County.....	57
Manner of Collision in MC Crashes.....	57
Acknowledgements	58

2022 Arizona Crash Facts Summary

BREAKDOWN OF ALL CRASHES IN ARIZONA

TOTAL	119,991
FATAL	1,178
INJURY	35,878
PROPERTY DAMAGE ONLY	82,935
URBAN	103,571
RURAL	16,420
ALCOHOL RELATED	5,489
PEDESTRIAN	1,888
BICYCLE	1,159
MOTORCYCLE	2,911
SINGLE VEHICLE	19,493
MULTI-UNIT	100,498

BREAKDOWN OF FATAL CRASHES IN ARIZONA

TOTAL	1,178
ALCOHOL RELATED	202
URBAN	775
RURAL	403
SINGLE VEHICLE	346
MULTI-UNIT	832
ALCOHOL RELATED SINGLE VEHICLE	65
ALCOHOL RELATED MULTI-UNIT	137

BREAKDOWN OF PERSONS KILLED AND INJURED

TYPE	KILLED	INJURED
IN ALL CRASHES	1,294	52,411
IN ALCOHOL RELATED CRASHES	223	3,538
IN URBAN CRASHES	822	44,600
IN RURAL CRASHES	472	7,811
IN SPEED RELATED CRASHES*	426	20,069
IN LANE DEPARTURE CRASHES	811	16,248
IN CRASHES ON THE STATE HIGHWAY SYSTEM	473	17,133
IN CRASHES ON LOCAL ROADS	821	35,278
USING SAFETY DEVICE	364	42,255
NOT USING SAFETY DEVICE	367	3,277
DRIVERS AGE 24 OR YOUNGER	111	8,285
DRINKING DRIVERS AGE 24 OR YOUNGER	10	391

BREAKDOWN OF CRASHES BY TIME

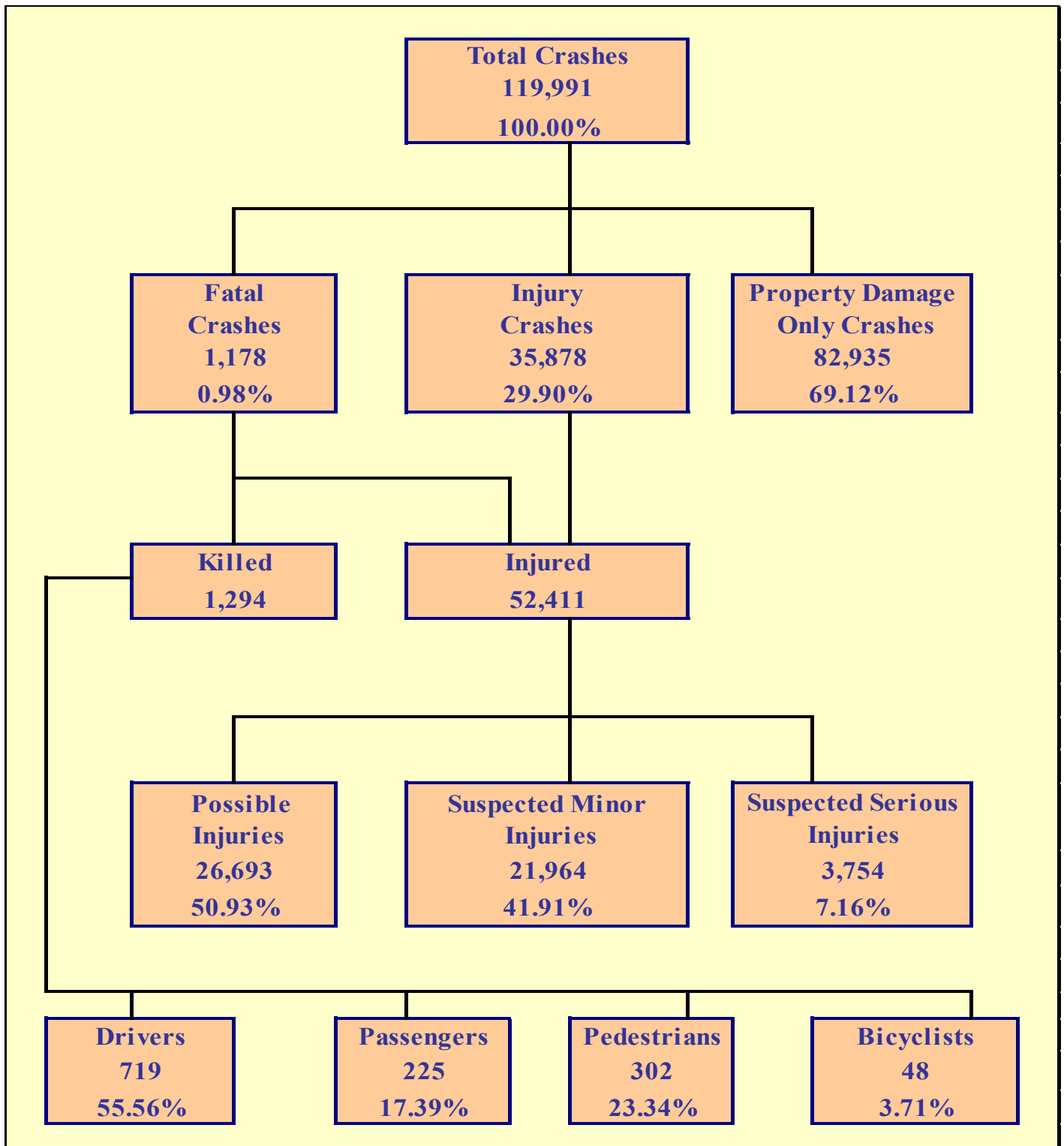
PEAK MONTH FOR ALL CRASHES	MARCH
PEAK DAY FOR ALL CRASHES	FRIDAY
PEAK HOUR FOR ALL CRASHES	3 PM - 4 PM
PEAK MONTH FOR FATAL CRASHES	OCTOBER
PEAK DAY FOR FATAL CRASHES	SATURDAY
PEAK HOUR FOR FATAL CRASHES	7 PM - 8 PM
PEAK DATE FOR ALL CRASHES IN 2022	WEDNESDAY FEBRUARY 23RD (509 CRASHES)
PEAK DATE FOR FATAL CRASHES IN 2022	5 DAYS TIED WITH 8 CRASHES (1/14, 2/19, 3/19, 10/22, 10/27)
PEAK HOUR FOR MOTORCYCLE CRASHES	4 PM - 5 PM
PEAK HOUR FOR ALCOHOL RELATED CRASHES	2 AM - 3 AM
PEAK HOUR FOR PEDESTRIAN CRASHES	7 PM - 8 PM
PEAK HOUR FOR BICYCLE CRASHES	4 PM - 5 PM

*Note: These numbers represent the total number of fatalities and injuries in crashes where the violation "speed too fast for conditions" or "exceeded lawful speed" was marked on the crash report.

2022 Arizona Crash Facts Summary

Fatalities in Arizona since 1925

Year	Total Fatalities	Year	Total Fatalities
1925	76	1974	751
1926	120	1975	670
1927	147	1976	739
1928	130	1977	933
1929	157	1978	1,027
1930	190	1979	1,029
1931	159	1980	947
1932	166	1981	916
1933	154	1982	724
1934	205	1983	675
1935	217	1984	869
1936	244	1985	893
1937	258	1986	1,007
1938	200	1987	939
1939	215	1988	944
1940	228	1989	879
1941	272	1990	869
1942	230	1991	816
1943	168	1992	811
1944	180	1993	799
1945	283	1994	904
1946	236	1995	1,035
1947	256	1996	997
1948	301	1997	950
1949	281	1998	981
1950	325	1999	1,028
1951	415	2000	1,037
1952	396	2001	1,057
1953	397	2002	1,132
1954	402	2003	1,125
1955	358	2004	1,159
1956	486	2005	1,193
1957	461	2006	1,301
1958	509	2007	1,071
1959	517	2008	938
1960	513	2009	806
1961	510	2010	759
1962	510	2011	827
1963	513	2012	821
1964	588	2013	849
1965	550	2014	774
1966	643	2015	897
1967	574	2016	952
1968	695	2017	998
1969	750	2018	1,011
1970	762	2019	980
1971	755	2020	1,054
1972	812	2021	1,192
1973	975	2022	1,294



Section 1: – Highlights and Historical Trends

Table 1 – 1

Arizona Crash Facts Summary and Comparison

Category	2021	2022	Percent Change
Total Crashes	121,506	119,991	-1.25%
Total Fatalities	1,192	1,294	8.56%
Total Injuries	51,744	52,411	1.29%
Alcohol Related Fatalities	253	223	-11.86%
Alcohol Related Injuries	3,617	3,538	-2.18%
Urban Fatalities	763	822	7.73%
Urban Injuries	43,857	44,600	1.69%
Rural Fatalities	429	472	10.02%
Rural Injuries	7,887	7,811	-0.96%
MC Operator and Passenger Fatalities	167	228	36.53%
MC Operator and Passenger Injuries	2,215	2,415	9.03%
Pedestrian Fatalities	260	302	16.15%
Pedestrian Injuries	1,546	1,669	7.96%
Bicyclist Fatalities	45	48	6.67%
Bicyclist Injuries	1,010	1,128	11.68%
Millions of vehicle miles traveled (VMT)*	73,760	73,778	0.02%
Fatalities per 100 million VMT	1.62	1.75	8.53%
Injuries per 100 million VMT	70.15	71.04	1.26%
*The VMT figure for 2022 is preliminary and subject to change.			

Arizona at a Glance – 2022

- Approximately **3.55** persons were killed each day.
- One person was killed every **6** hours and **46** minutes.
- There were **144** persons injured every day.
- One person was injured every **10** minutes and **2** seconds.
- Alcohol Related crashes accounted for **4.57%** of all crashes and **17.15%** of all fatal crashes.
- Crashes where overturning was the first harmful event accounted for **2.09%** of all crashes and **10.19%** of fatal crashes.
- Single vehicle crashes accounted for **16.25%** of all crashes and **29.37%** of all fatal crashes.
- Of all Pedestrian crashes, **16.05%** were fatal while **4.06%** of Bicycle crashes were fatal.
- Crashes which occurred during daylight hours (6:00 a.m. to 6:00 p.m.) accounted for **70.4%** of all crashes.
- Motor vehicle crashes resulted in **\$21.294** billion in economic losses to Arizona.
- Children age 14 and younger accounted for **42** fatalities and **2,789** injuries in motor vehicle crashes.

Section 1: – Highlights and Historical Trends

Table 1 – 2
Licensed Drivers, Motor Vehicle Registration
and Crash History in Arizona

Calendar Year	Total Crashes	Fatal Crashes	Injury Crashes	Property Damage Only Crashes	Total Persons Killed	Total Persons Injured	Total Licensed Drivers	Total Registered Vehicles
2008	120,557	843	37,515	82,199	938	56,539	4,360,711	4,842,188
2009	107,149	709	33,506	72,934	806	50,809	4,434,719	4,787,350
2010	106,900	695	33,419	72,786	759	50,463	4,537,653	4,805,904
2011	103,958	756	33,223	69,979	827	49,856	4,634,405	4,855,014
2012	103,940	738	33,595	69,607	821	50,092	4,736,517	4,969,620
2013	107,576	782	34,137	72,657	849	50,440	4,826,903	5,130,780
2014	109,883	709	34,589	74,585	774	51,114	4,922,676	5,300,980
2015	117,121	811	36,371	79,939	897	53,922	5,025,811	5,487,058
2016	127,345	856	38,776	87,713	952	57,003	5,135,262	5,677,208
2017	127,858	917	38,103	88,838	998	55,938	5,221,403	5,843,368
2018	127,749	918	36,711	90,120	1,011	53,681	5,308,307	6,009,850
2019	131,101	909	37,346	92,846	980	54,411	5,375,341	6,167,481
2020	99,107	967	28,728	69,412	1,054	41,544	5,772,928	6,356,220
2021	121,506	1,076	35,277	85,153	1,192	51,744	5,808,545	6,468,399
2022	119,991	1,178	35,878	82,935	1,294	52,411	5,806,528	6,701,468

Table 1 – 3
Historical Trends – VMT and Rates

Calendar Year	Arizona Fatality Rate	Arizona Injury Rate (all injury types)	Arizona Traffic Fatalities	Estimated Motor Vehicle Miles Traveled	Arizona Suspected Serious Injury Rate
2018	1.53	81.16	1,011	66,145	5.73
2019	1.39	77.42	980	70,281	5.16
2020	1.61	63.35	1,054	65,574	4.74
2021	1.62	70.15	1,192	73,760	5.22
2022	1.75	71.04	1,294	73,778	5.09

Vehicle miles traveled are shown in million miles and rates per 100 million miles

The VMT figure for 2022 is preliminary and subject to change.

Section 1: – Highlights and Historical Trends

Statewide Economic Loss Due to Motor Vehicle Crashes

Fatalities	\$12,312,890,074
Suspected Serious Injuries	\$2,066,573,246
Suspected Minor Injuries	\$3,275,535,248
Possible Injuries	\$2,753,249,485
Property Damage Only	\$885,745,800
TOTAL	\$21,293,993,853

Table 1 – 4

Estimated Economic Loss by County

County	Cost of Traffic Crashes			
	Fatalities	Injuries	PDO	Total
Apache	\$ 256,915,017	\$ 41,733,979	\$ 3,001,080	\$ 301,650,076
Cochise	\$ 294,976,501	\$ 109,050,282	\$ 10,658,640	\$ 414,685,423
Coconino	\$ 570,922,260	\$ 239,644,227	\$ 27,821,400	\$ 838,387,887
Gila	\$ 237,884,275	\$ 81,468,427	\$ 6,952,680	\$ 326,305,382
Graham	\$ 47,576,855	\$ 25,585,056	\$ 2,210,760	\$ 75,372,671
Greenlee	\$ 38,061,484	\$ 4,805,611	\$ 501,960	\$ 43,369,055
La Paz	\$ 66,607,597	\$ 36,368,043	\$ 3,075,840	\$ 106,051,480
Maricopa	\$ 6,280,144,860	\$ 5,293,743,274	\$ 648,019,680	\$ 12,221,907,814
Mohave	\$ 675,591,341	\$ 292,857,093	\$ 24,991,200	\$ 993,439,634
Navajo	\$ 418,676,324	\$ 101,528,589	\$ 9,740,160	\$ 529,945,073
Pima	\$ 1,636,643,812	\$ 847,432,746	\$ 64,432,440	\$ 2,548,508,998
Pinal	\$ 932,506,358	\$ 419,623,809	\$ 36,194,520	\$ 1,388,324,687
Santa Cruz	\$ 66,607,597	\$ 19,700,747	\$ 4,005,000	\$ 90,313,344
Yavapai	\$ 551,891,518	\$ 344,522,513	\$ 27,949,560	\$ 924,363,591
Yuma	\$ 237,884,275	\$ 237,293,583	\$ 16,190,880	\$ 491,368,738
TOTALS	\$ 12,312,890,074	\$ 8,095,357,979	\$ 885,745,800	\$ 21,293,993,853

Table 1 – 5

State Adjusted Crash Costs

1.	Fatality	\$9,515,371
2.	Suspected Serious Injury	\$550,499
3.	Suspected Minor Injury	\$149,132
4.	Possible Injury	\$103,145
5.	Property Damage Only	\$10,680

Source: www.safety.fhwa.dot.gov/hsip/docs/fhwasa17071.pdf

Section 1: – Highlights and Historical Trends

Traffic Crashes in Arizona by Year

Chart 1 – 1
Total Crashes

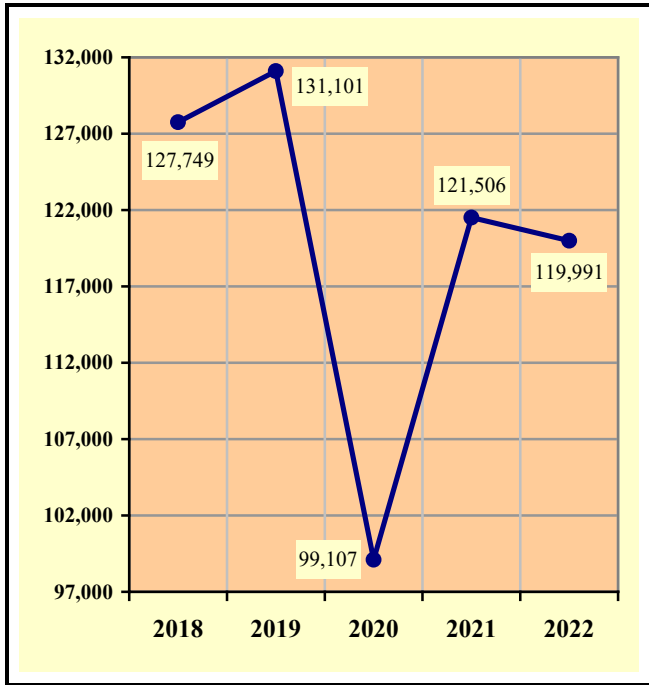


Chart 1 – 2
Fatal Crashes

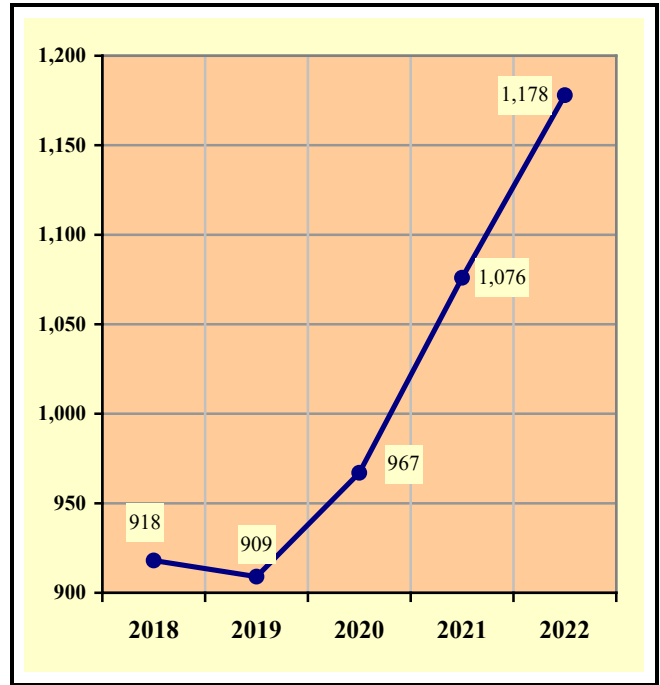


Chart 1 – 3
Injury Crashes

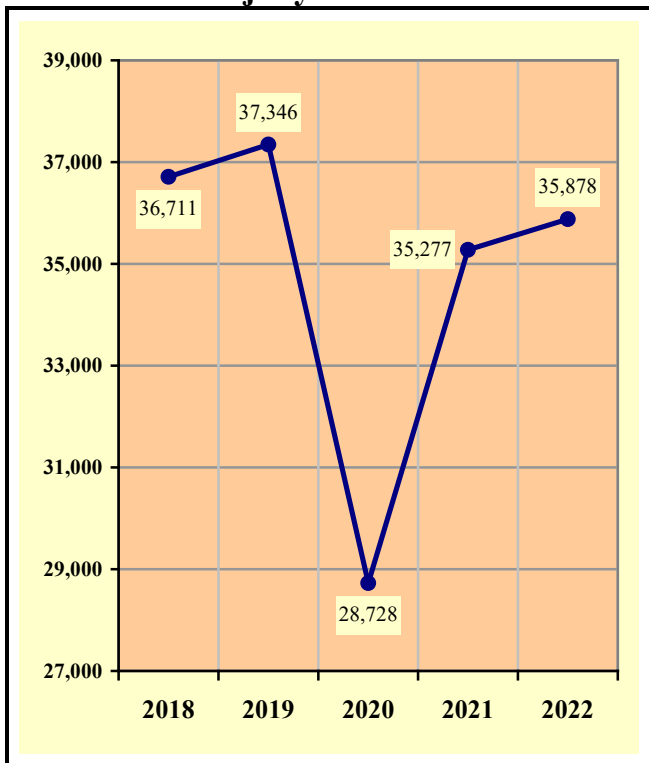
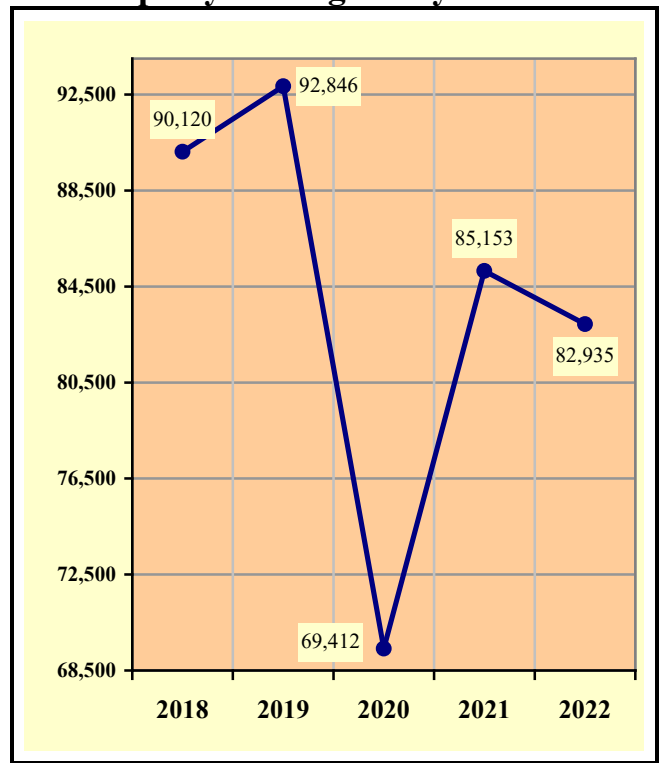


Chart 1 – 4
Property Damage Only Crashes



Section 1: – Highlights and Historical Trends

Table 1 – 6

Victims of Motor Vehicle Crashes

Age of Victim	Persons Killed				Persons Injured			
	Total	Male	Female	Gender Unknown	Total	Male	Female	Gender Unknown
0-4	13	8	5	0	574	293	281	0
5-9	13	8	5	0	913	449	464	0
10-14	16	10	6	0	1,302	671	631	0
15-19	80	60	20	0	5,305	2,616	2,689	0
20-24	108	79	29	0	6,653	3,418	3,235	0
25-34	226	153	73	0	10,827	5,788	5,039	0
35-44	217	161	56	0	7,956	4,113	3,843	0
45-54	162	125	37	0	6,582	3,301	3,281	0
55-64	194	135	59	0	5,734	2,885	2,849	0
65-74	160	112	48	0	3,723	1,875	1,848	0
75 & Older	94	65	29	0	2,350	1,116	1,234	0
Unknown	11	5	3	3	492	234	192	66
TOTAL	1,294	921	370	3	52,411	26,759	25,586	66

Table 1 – 7

Suspected Serious Injuries by Person Type 2018-2022

Year	Drivers	Passengers	Pedestrians	Bicyclists	Total
2018	2,434	796	387	173	3,790
2019	2,319	790	367	151	3,627
2020	1,994	680	311	123	3,108
2021	2,414	899	400	138	3,851
2022	2,380	806	430	138	3,754
TOTAL	11,541	3,971	1,895	723	18,130

Table 1 – 8

Young drivers (age 15-24) killed in crashes 2018-2022

Year	Age of Driver										Total
	15	16	17	18	19	20	21	22	23	24	
2018	1	2	4	13	6	12	10	13	12	14	87
2019	0	6	4	9	9	11	13	12	9	9	82
2020	2	6	9	6	12	14	12	12	14	10	97
2021	1	3	7	14	8	13	18	16	26	11	117
2022	1	3	8	13	21	16	11	11	12	13	109
TOTAL	5	20	32	55	56	66	64	64	73	57	492

Section 1: – Highlights and Historical Trends

Chart 1 – 5

State Highway System (SHS) vs Local Road Fatalities

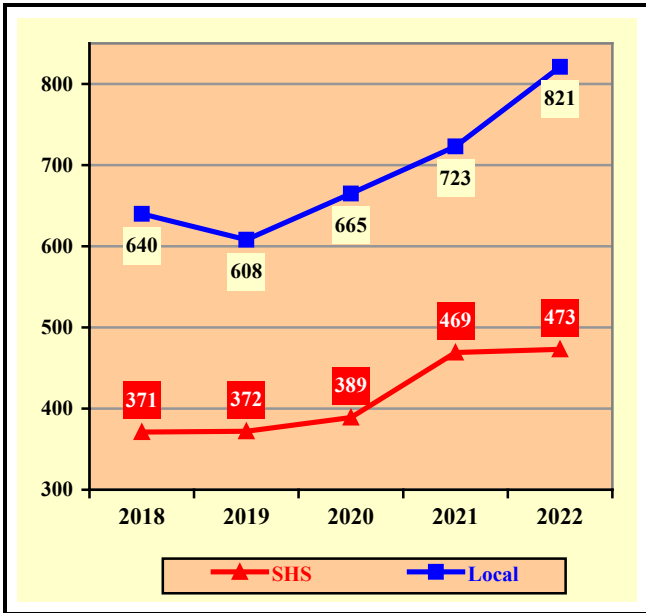


Chart 1 – 6

Arizona Fatality Rate vs. Injury Rate



Chart 1 – 7

Traffic Fatalities by Geographic Region

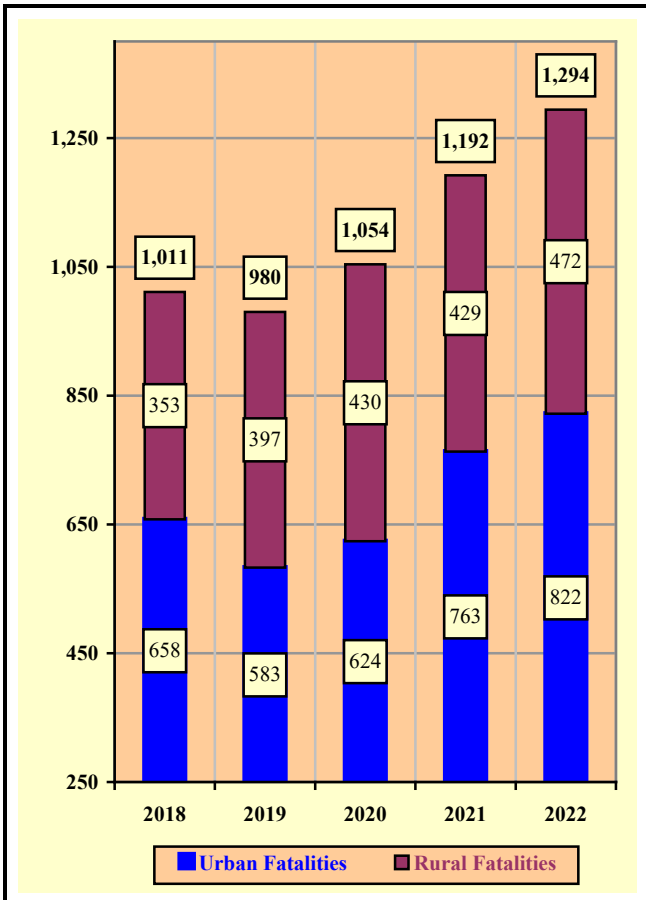
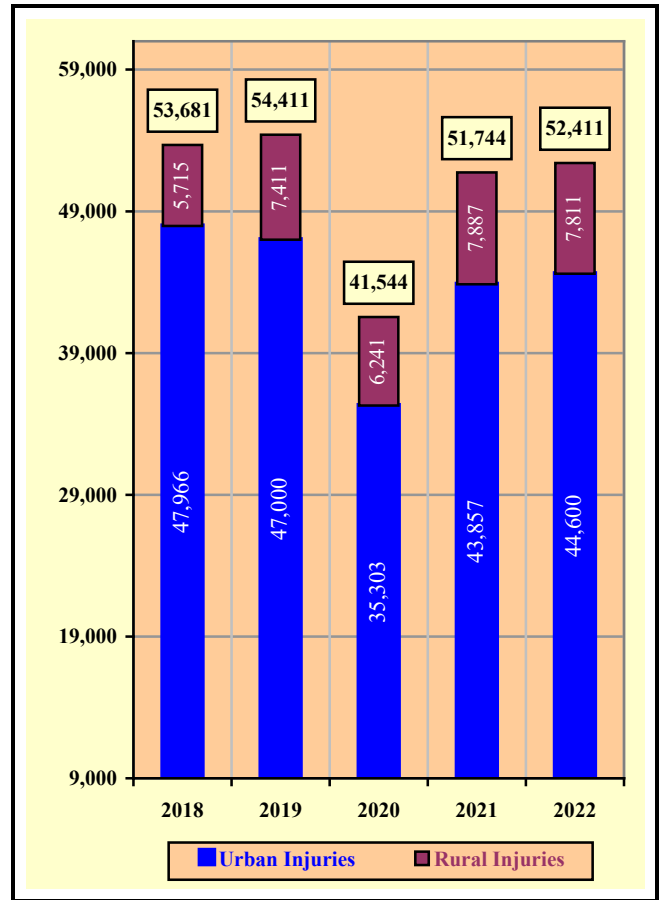


Chart 1 – 8

Traffic Injuries by Geographic Region



Section 1: – Highlights and Historical Trends

Table 1 – 9

Holiday Crash Statistics

Holidays such as Memorial Day, Labor Day, and Thanksgiving are regarded as three or four day weekend holidays for statistical purposes. Holidays such as Christmas, New Year’s Day, and the Fourth of July are celebrated on specific dates; which make the holiday period range from two to five days in length.

Holiday fatality statistics are based on fatal crashes occurring from 6:00 p.m. on the last working day prior to the holiday through 5:59 a.m. the day following the holiday period. Example: Thanksgiving fatalities are counted from Wednesday evening at 6:00 p.m. through 5:59 a.m. of the following Monday.

2022 Holidays	Beginning at 6:00 p.m.	Ending at 5:59 a.m.	Days Counted for Holiday Period	Fatal Crashes	Persons Killed	Alcohol Related Fatal Crashes	Alcohol Related Fatalities
New Year’s Day	Thursday	Monday	4	13	15	5	7
	12/30/2021	1/3/2022					
Memorial Day	Friday	Tuesday	4	10	10	1	1
	5/27/2022	5/31/2022					
July 4th	Friday	Tuesday	4	11	12	3	4
	7/1/2022	7/5/2022					
Labor Day	Friday	Tuesday	4	13	13	3	3
	9/2/2022	9/6/2022					
Thanksgiving Day	Wednesday	Monday	5	16	16	4	4
	11/23/2022	11/28/2022					
Christmas Day	Friday	Tuesday	4	8	8	1	1
	12/23/2022	12/27/2022					

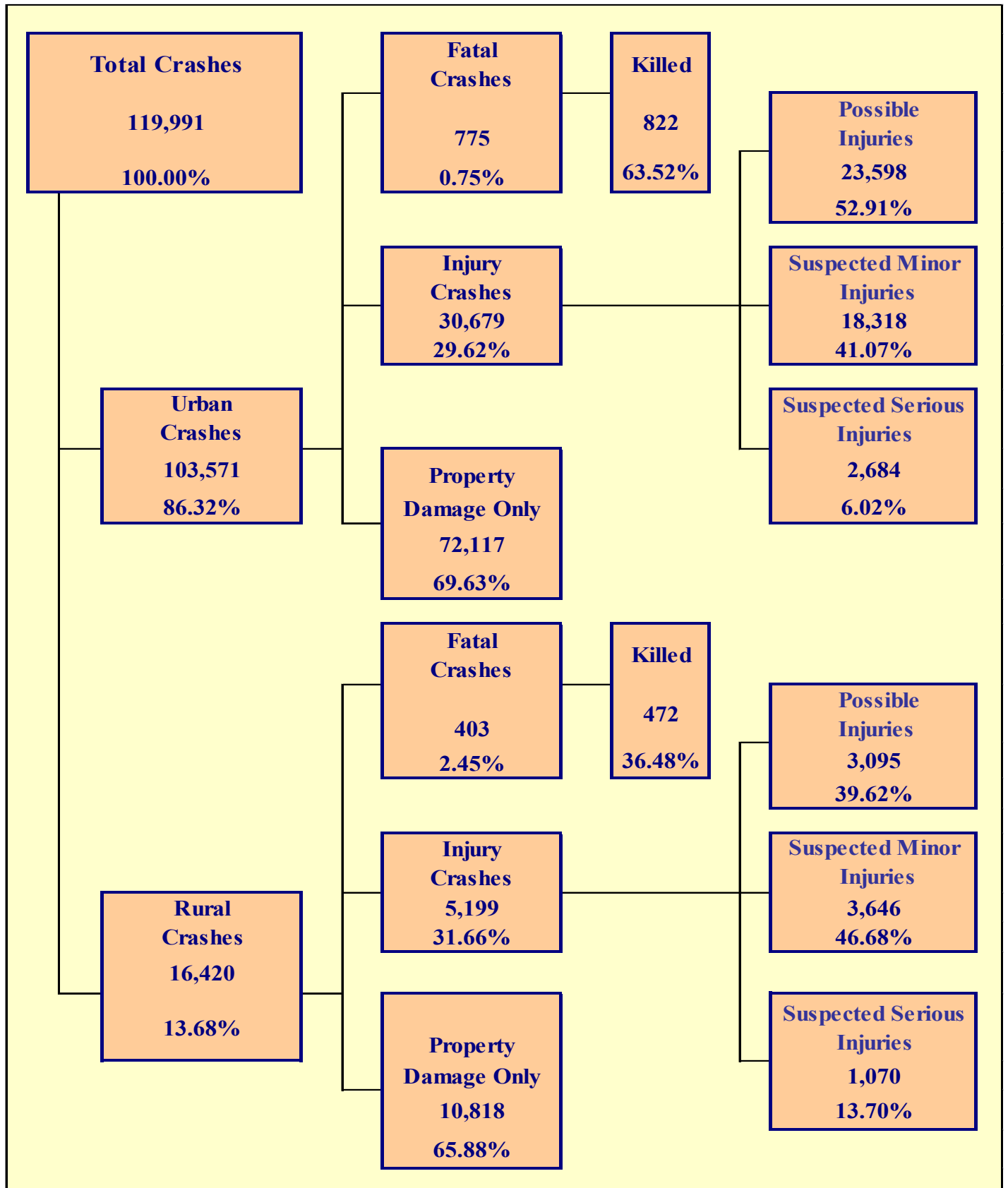
Fatal Crashes by Year	New Year’s Day	Memorial Day	July 4th	Labor Day	Thanksgiving	Christmas Day	Total
2018	10	7	5	8	8	10	48
2019	8	13	13	12	11	2	59
2020	2	11	9	10	12	10	54
2021	10	10	7	14	15	12	68
2022	13	10	11	13	16	8	71

Persons Killed	New Year’s Day	Memorial Day	July 4th	Labor Day	Thanksgiving	Christmas Day	Total
2018	10	8	5	9	8	11	51
2019	9	13	14	12	11	2	61
2020	2	11	9	10	12	14	58
2021	10	14	8	14	18	12	76
2022	15	10	12	13	16	8	74

Days Counted for Holiday Period	New Year’s Day	Memorial Day	July 4th	Labor Day	Thanksgiving	Christmas Day	Total
2018	4	4	2	4	5	5	24
2019	5	4	5	4	5	2	25
2020	2	4	4	4	5	4	23
2021	4	4	4	4	5	4	25
2022	4	4	4	4	5	4	25

Section 2

Geographic Location



Section 2: – Geographic Location

Fatal Crashes in Arizona (1,178) accounted for 0.98% of all crashes, Injury Crashes (35,878) accounted for 29.90%, and Property Damage Only (PDO) Crashes (82,935) accounted for 69.12%.

**Table 2 – 1
Crash Severity by First Harmful Event Statewide**

First Harmful Event Type	Number of Crashes				Number of Persons	
	Total	Fatal	Injury	PDO	Killed	Injured
Collision with Motor Vehicle in Transport	92,048	460	26,739	64,849	538	41,559
Overtuning	2,504	120	1,533	851	133	2,059
Collision with Pedestrian	1,787	287	1,500	0	289	1,620
Collision with Bicyclist	1,147	46	1,101	0	47	1,134
Collision with Animal	1,830	4	238	1,588	4	280
Collision with Fixed Object	13,412	205	3,860	9,347	221	4,637
Collision with Non-fixed Object*	6,655	19	835	5,801	22	1,047
Vehicle Fire or Explosion	366	0	17	349	0	17
Other Non-collision**	207	4	55	148	4	58
Unknown	35	33	0	2	36	0
TOTAL	119,991	1,178	35,878	82,935	1,294	52,411
*Includes Collision with Parked Vehicles, Trains, Railway Vehicles, and Work Zone Equipment						
**Includes Vehicle Immersion, Jackknife, and Cargo Loss or Shift						

**Table 2 – 2
Crashes by County**

County	Number of Crashes				Number of Persons	
	Total	Fatal	Injury	PDO	Killed	Injured
Apache	426	24	121	281	27	212
Cochise	1,409	28	383	998	31	570
Coconino	3,587	51	931	2,605	60	1,386
Gila	977	21	305	651	25	440
Graham	315	5	103	207	5	147
Greenlee	72	4	21	47	4	26
La Paz	421	7	126	288	7	183
Maricopa	85,970	613	24,681	60,676	660	36,035
Mohave	3,475	63	1,072	2,340	71	1,584
Navajo	1,312	35	365	912	44	555
Pima	9,880	166	3,681	6,033	172	5,265
Pinal	5,144	79	1,676	3,389	98	2,517
Santa Cruz	468	7	86	375	7	118
Yavapai	3,930	50	1,263	2,617	58	1,804
Yuma	2,605	25	1,064	1,516	25	1,569
TOTAL	119,991	1,178	35,878	82,935	1,294	52,411

Section 2: – Geographic Location

Table 2 – 3

Crash Severity by First Harmful Event in Urban Areas

First Harmful Event Type	Number of Crashes				Number of Persons	
	Total	Fatal	Injury	PDO	Killed	Injured
Collision with Motor Vehicle in Transport	83,993	305	24,138	59,550	339	37,159
Overturning	896	37	591	268	40	728
Collision with Pedestrian	1,666	246	1,420	0	248	1,524
Collision with Bicyclist	1,083	42	1,041	0	42	1,072
Collision with Animal	392	1	44	347	1	51
Collision with Fixed Object	9,790	118	2,723	6,949	125	3,182
Collision with Non-fixed Object*	5,457	9	670	4,778	10	831
Vehicle Fire or Explosion	134	0	11	123	0	11
Other Non-collision**	145	3	41	101	3	42
Unknown	15	14	0	1	14	0
TOTAL	103,571	775	30,679	72,117	822	44,600
*Includes Collision with Parked Vehicles, Trains, Railway Vehicles, and Work Zone Equipment						
**Includes Vehicle Immersion, Jackknife, and Cargo Loss or Shift						

Table 2 – 4

Crash Severity by First Harmful Event in Rural Areas

First Harmful Event Type	Number of Crashes				Number of Persons	
	Total	Fatal	Injury	PDO	Killed	Injured
Collision with Motor Vehicle in Transport	8,055	155	2,601	5,299	199	4,400
Overturning	1,608	83	942	583	93	1,331
Collision with Pedestrian	121	41	80	0	41	96
Collision with Bicyclist	64	4	60	0	5	62
Collision with Animal	1,438	3	194	1,241	3	229
Collision with Fixed Object	3,622	87	1,137	2,398	96	1,455
Collision with Non-fixed Object*	1,198	10	165	1,023	12	216
Vehicle Fire or Explosion	232	0	6	226	0	6
Other Non-collision**	62	1	14	47	1	16
Unknown	20	19	0	1	22	0
TOTAL	16,420	403	5,199	10,818	472	7,811
*Includes Collision with Parked Vehicles, Trains, Railway Vehicles, and Work Zone Equipment						
**Includes Vehicle Immersion, Jackknife, and Cargo Loss or Shift						

While Urban Crashes in Arizona (103,571) accounted for 86.32% of all crashes, they accounted for 65.79% of all Fatal Crashes (775) occurring in 2022.

While Rural Crashes in Arizona (16,420) accounted for 13.68% of all crashes, they accounted for 34.21% of all Fatal Crashes (403) occurring in 2022.

Section 2: – Geographic Location

Table 2 – 5

Analysis by Jurisdiction

COUNTIES Cities	Number of Crashes				No. of Persons		Alcohol Related		
	Total	Fatal	Injury	PDO	Killed	Injured	Crashes	Killed	Injured
Apache County	389	24	109	256	27	195	30	5	25
Eagar	9	0	1	8	0	2	0	0	0
Springerville	12	0	4	8	0	6	0	0	0
St. Johns	16	0	7	9	0	9	2	0	1
TOTAL	426	24	121	281	27	212	32	5	26

Cochise County	602	15	167	420	17	256	24	2	22
Benson	144	5	28	111	5	51	4	0	1
Bisbee	5	0	1	4	0	1	0	0	0
Douglas	115	3	28	84	3	38	7	0	2
Huachuca City	0	0	0	0	0	0	0	0	0
Sierra Vista	510	4	152	354	5	214	12	0	5
Tombstone	5	0	2	3	0	3	1	0	0
Willcox	28	1	5	22	1	7	0	0	0
TOTAL	1,409	28	383	998	31	570	48	2	30

Coconino County	1,502	40	435	1,027	49	670	88	10	73
Flagstaff	1,778	8	434	1,336	8	624	85	4	64
Fredonia	3	0	1	2	0	2	0	0	0
Williams	110	1	12	97	1	18	3	0	1
Page	106	2	31	73	2	52	18	1	8
Sedona	88	0	18	70	0	20	6	0	2
TOTAL	3,587	51	931	2,605	60	1,386	200	15	148

Gila County	549	18	178	353	22	262	42	3	33
Globe	168	2	60	106	2	84	8	1	6
Hayden	0	0	0	0	0	0	0	0	0
Miami	26	0	9	17	0	10	1	0	1
Payson	234	1	58	175	1	84	11	0	5
Winkelman	0	0	0	0	0	0	0	0	0
TOTAL	977	21	305	651	25	440	62	4	45

Graham County	140	5	43	92	5	60	13	0	13
Pima	8	0	5	3	0	11	1	0	3
Safford	110	0	38	72	0	52	20	0	14
Thatcher	57	0	17	40	0	24	3	0	1
TOTAL	315	5	103	207	5	147	37	0	31

Greenlee County	59	4	17	38	4	22	5	2	1
Clifton	10	0	3	7	0	3	0	0	0
Duncan	3	0	1	2	0	1	0	0	0
TOTAL	72	4	21	47	4	26	5	2	1

Section 2: – Geographic Location

Table 2 – 5
Analysis by Jurisdiction

COUNTIES Cities	Number of Crashes				No. of Persons		Alcohol Related		
	Total	Fatal	Injury	PDO	Killed	Injured	Crashes	Killed	Injured
La Paz County	316	6	97	213	6	148	12	1	8
Parker	39	0	9	30	0	11	3	0	2
Quartzite	66	1	20	45	1	24	1	0	1
TOTAL	421	7	126	288	7	183	16	1	11

Maricopa County	7,020	105	2,246	4,669	118	3,294	291	26	199
Apache Junction	23	1	8	14	1	12	2	1	2
Avondale	1,641	6	438	1,197	6	629	59	1	31
Buckeye	1,339	7	324	1,008	7	538	49	2	26
Cave Creek	74	1	16	57	1	22	12	1	4
Chandler	4,257	19	1,225	3,013	20	1,786	196	5	120
El Mirage	406	4	103	299	4	153	22	0	23
Gila Bend	66	1	25	40	2	42	2	2	1
Gilbert	2,756	18	569	2,169	19	810	132	5	56
Glendale	5,171	33	1,397	3,741	33	2,035	195	3	125
Goodyear	1,697	8	502	1,187	9	743	85	2	53
Mesa	6,660	53	1,996	4,611	55	2,842	298	8	208
Paradise Valley	91	0	17	74	0	21	3	0	0
Peoria	2,962	17	959	1,986	22	1,351	133	4	62
Phoenix	38,331	282	10,668	27,381	301	15,614	1,297	51	799
Scottsdale	3,485	16	1,126	2,343	16	1,710	213	5	144
Surprise	1,884	12	521	1,351	16	719	53	0	37
Tempe	6,585	20	2,170	4,395	20	3,145	318	2	192
Tolleson	450	3	115	332	3	198	17	0	10
Wickenburg	162	1	22	139	1	29	6	0	4
Youngtown	62	2	11	49	2	15	4	1	0
Guadalupe	161	0	33	128	0	49	4	0	2
Litchfield Park	35	0	9	26	0	11	4	0	2
Queen Creek	463	4	131	328	4	203	16	1	14
Fountain Hills	159	0	34	125	0	39	10	0	6
Carefree	30	0	16	14	0	25	2	0	2
TOTAL	85,970	613	24,681	60,676	660	36,035	3,423	120	2,122

Mohave County	1,551	38	527	986	43	813	87	7	76
Kingman	660	4	157	499	4	216	24	2	18
Lake Havasu City	570	11	192	367	11	260	59	0	38
Bullhead City	686	9	193	484	12	281	50	0	39
Colorado City	8	1	3	4	1	14	0	0	0
TOTAL	3,475	63	1,072	2,340	71	1,584	220	9	171

Crashes in Maricopa County accounted for 71.65% of all crashes and 52.04% of fatal crashes.

Section 2: – Geographic Location

Table 2 – 5
Analysis by Jurisdiction

COUNTIES Cities	Number of Crashes				No. of Persons		Alcohol Related		
	Total	Fatal	Injury	PDO	Killed	Injured	Crashes	Killed	Injured
Navajo County	640	27	187	426	34	291	48	6	44
Holbrook	92	2	31	59	2	50	11	1	6
Show Low	329	5	79	245	7	118	14	0	8
Snowflake	46	0	13	33	0	19	3	0	1
Taylor	47	1	11	35	1	17	1	0	0
Winslow	43	0	12	31	0	15	5	0	5
Pinetop-Lakeside	115	0	32	83	0	45	9	0	8
TOTAL	1,312	35	365	912	44	555	91	7	72
Pima County	2,691	52	896	1,743	55	1,301	167	13	94
South Tucson	44	1	9	34	1	13	2	0	2
Tucson	5,600	101	2,342	3,157	103	3,348	393	22	249
Sahuarita	267	1	75	191	1	98	15	0	10
Oro Valley	411	6	141	264	7	207	17	1	9
Marana	867	5	218	644	5	298	51	1	32
TOTAL	9,880	166	3,681	6,033	172	5,265	645	37	396
Pinal County	2,706	56	856	1,794	71	1,314	154	8	103
Casa Grande	841	7	267	567	7	372	42	1	19
Coolidge	246	3	108	135	4	170	14	0	17
Eloy	154	5	49	100	6	107	7	0	14
Florence	126	2	46	78	2	55	11	0	4
Kearny	6	0	0	6	0	0	0	0	0
Mammoth	1	0	0	1	0	0	0	0	0
Queen Creek	54	1	19	34	1	27	1	0	1
Superior	4	0	1	3	0	1	0	0	0
Apache Junction	543	3	172	368	4	237	30	0	19
Maricopa	463	2	158	303	3	234	30	0	22
TOTAL	5,144	79	1,676	3,389	98	2,517	289	9	199
Santa Cruz County	278	6	43	229	6	60	16	2	9
Nogales	189	1	43	145	1	58	6	1	3
Patagonia	1	0	0	1	0	0	0	0	0
TOTAL	468	7	86	375	7	118	22	3	12
Yavapai County	1,857	39	613	1,205	47	864	117	6	104
Clarkdale	24	1	3	20	1	5	5	0	0
Cottonwood	307	1	93	213	1	135	21	0	13
Jerome	7	0	2	5	0	2	0	0	0
Peoria	2	0	1	1	0	1	0	0	0
Prescott	689	2	217	470	2	291	36	0	13
Prescott Valley	530	4	167	359	4	243	32	1	18
Chino Valley	183	0	55	128	0	92	16	0	9
Camp Verde	201	3	63	135	3	97	15	0	12
Dewey-Humboldt	26	0	10	16	0	17	1	0	0
Sedona	93	0	36	57	0	53	6	0	10
Wickenburg	11	0	3	8	0	4	0	0	0
TOTAL	3,930	50	1,263	2,617	58	1,804	249	7	179

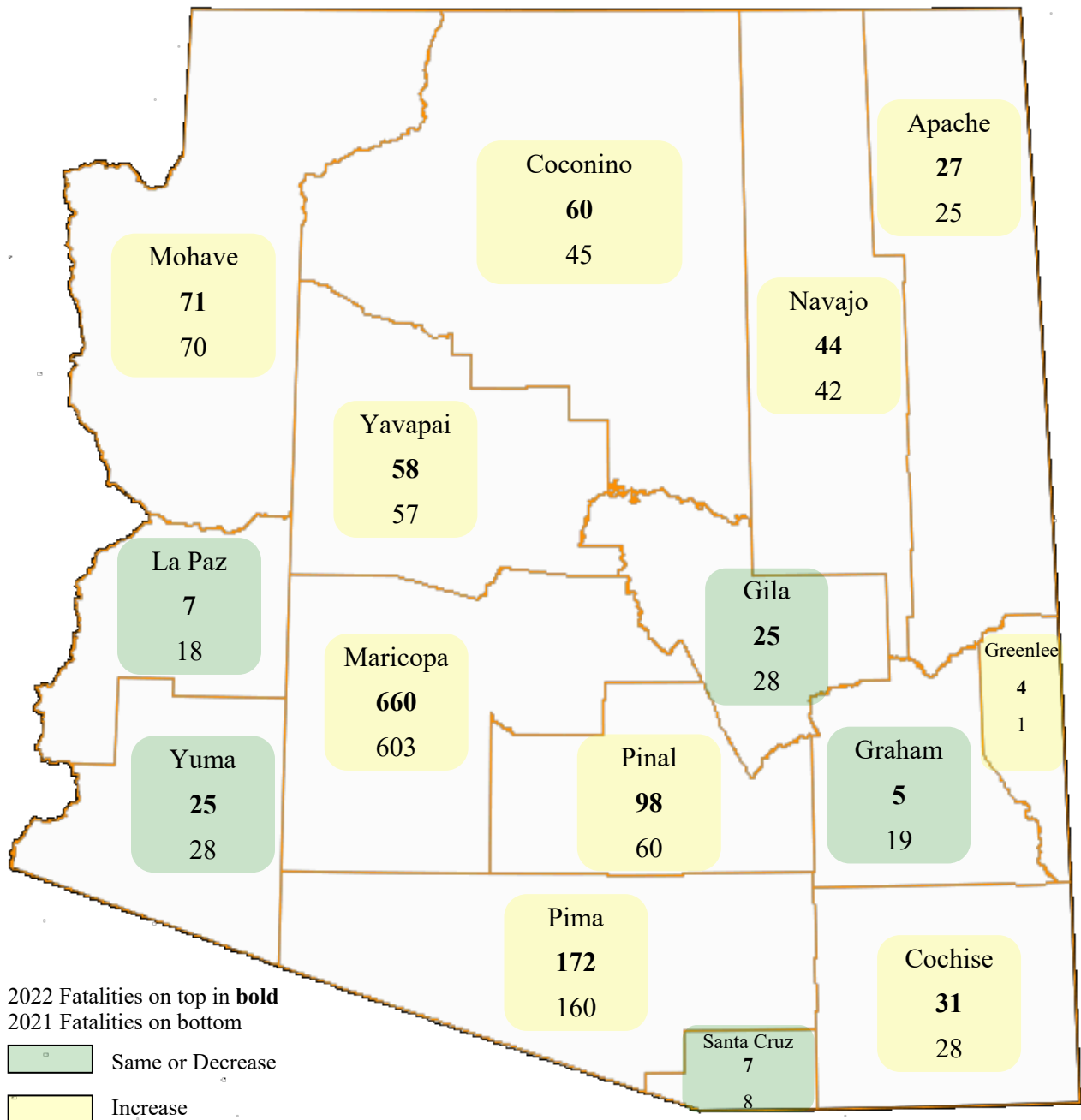
Section 2: – Geographic Location

Table 2 – 5
Analysis by Jurisdiction

COUNTIES Cities	Number of Crashes				No. of Persons		Alcohol Related		
	Total	Fatal	Injury	PDO	Killed	Injured	Crashes	Killed	Injured
Yuma County	850	16	291	543	16	416	49	1	30
Somerton	64	0	34	30	0	54	7	0	10
Yuma	1,488	9	697	782	9	1,042	87	1	53
Wellton	17	0	8	9	0	13	0	0	0
San Luis	186	0	34	152	0	44	7	0	2
TOTAL	2,605	25	1,064	1,516	25	1,569	150	2	95

Note: Some individual city data may be incomplete due to lack of timely reporting or changes in crash reporting procedures.

Total Fatalities by County for 2021 and 2022



Section 2: – Geographic Location

Chart 2 – 1

Urban and Rural Crashes by Day of Week

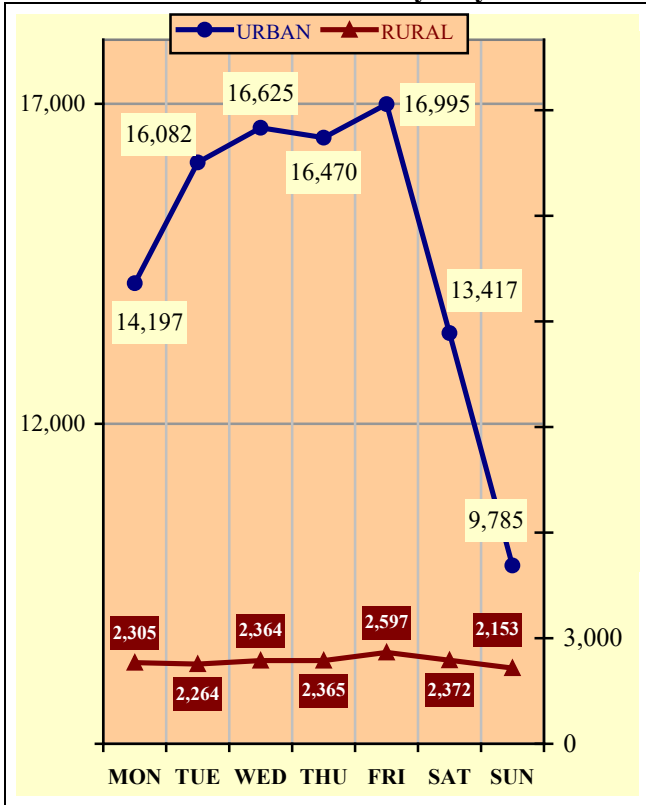


Chart 2 – 2

Urban and Rural Fatal Crashes by Day of Week

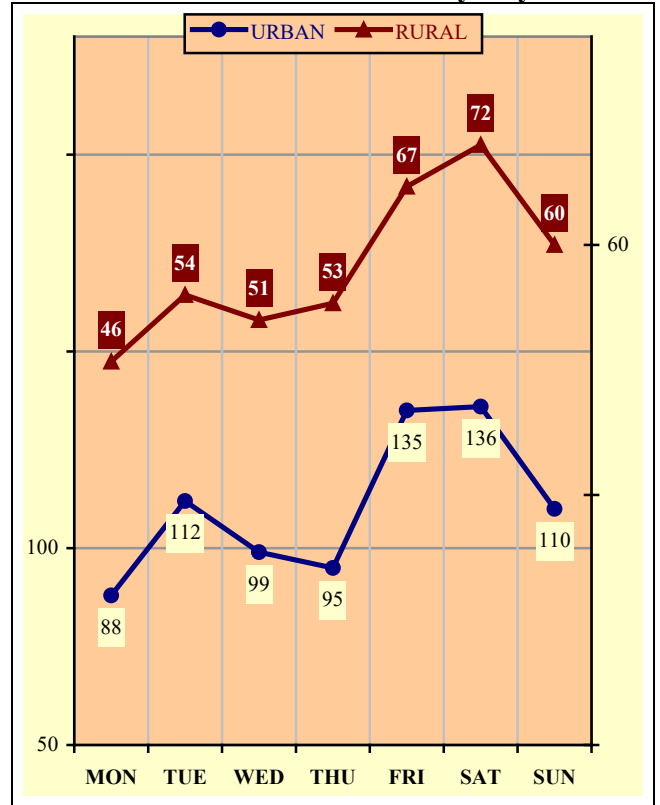
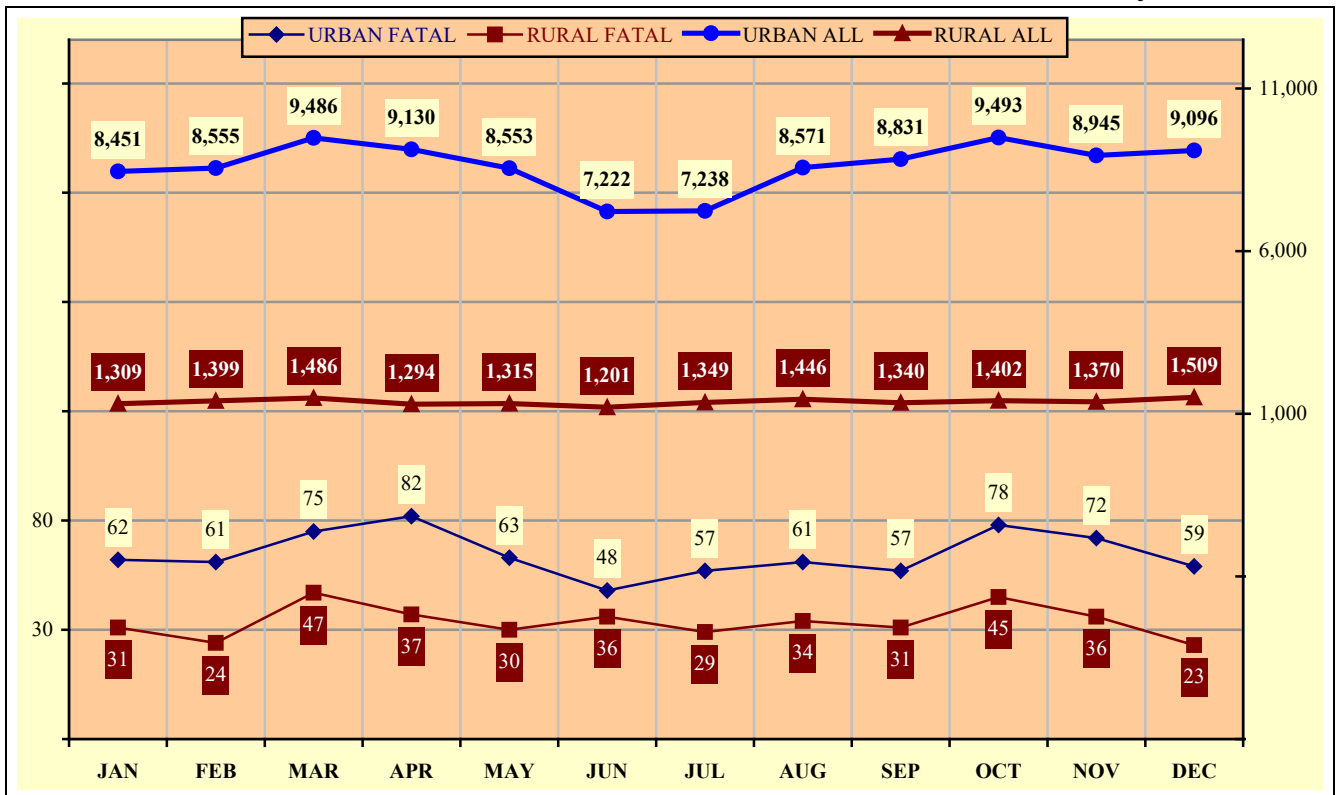


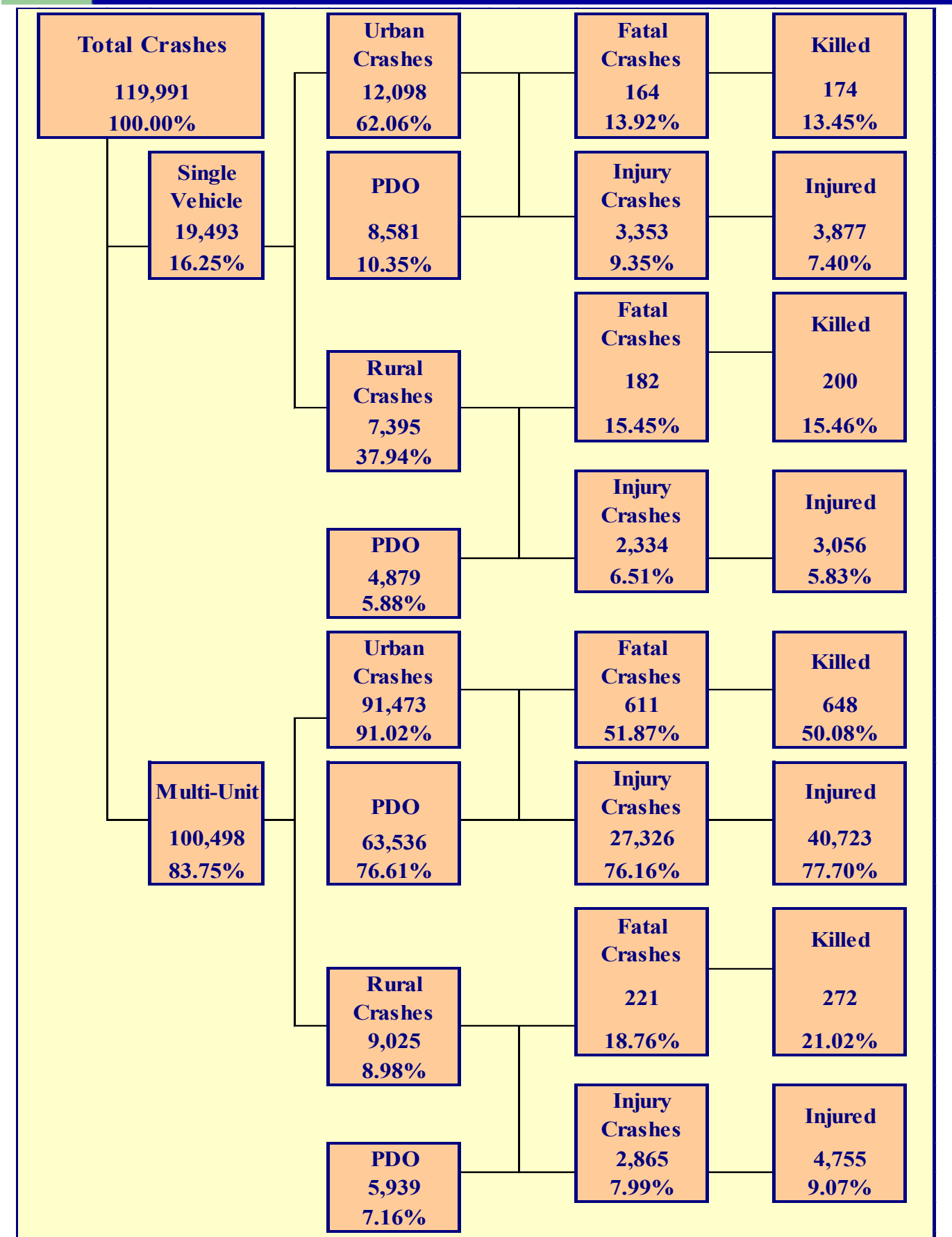
Chart 2 – 3

All Urban and Rural Crashes vs. Urban and Rural Fatal Crashes by Month



Section 3

Crash Descriptions



Section 3: – Crash Descriptions

Table 3 – 1
Manner of Collision in Multi-Unit Crashes

Manner of Collision Type	Number of Crashes							
	Total	Percent of Total Crashes	Fatal	Percent of Fatal Crashes	Injury	Percent of Injury Crashes	PDO	Percent of PDO Crashes
Angle	15,674	15.60%	113	13.58%	5,545	18.37%	10,016	14.42%
Left Turn	17,837	17.75%	104	12.50%	6,784	22.47%	10,949	15.76%
Rear End	38,697	38.51%	87	10.46%	11,578	38.35%	27,032	38.91%
Head-On	2,175	2.16%	85	10.22%	958	3.17%	1,132	1.63%
Sideswipe (same)	17,762	17.67%	32	3.85%	2,323	7.69%	15,407	22.18%
Sideswipe (opposite)	1,730	1.72%	25	3.00%	386	1.28%	1,319	1.90%
U-Turn	781	0.78%	9	1.08%	211	0.70%	561	0.81%
Other*	5,237	5.21%	368	44.23%	2,269	7.52%	2,600	3.74%
Unknown	605	0.60%	9	1.08%	137	0.45%	459	0.66%
TOTAL	100,498	100.00%	832	100.00%	30,191	100.00%	69,475	100.00%

*Other includes pedestrian and bicycle crashes

Table 3 – 2
Lighting Conditions

Type of Lighting Conditions	Number of Crashes				Number of Persons	
	Total	Fatal	Injury	PDO	Killed	Injured
Daylight	82,863	484	24,701	57,678	537	36,092
Dawn	2,050	15	610	1,425	16	863
Dusk	3,477	33	1,137	2,307	34	1,669
Dark - Lighted	23,653	361	7,167	16,125	387	10,563
Dark - Not Lighted	6,970	177	2,124	4,669	201	3,031
Dark - Unknown Lighting	339	13	68	258	13	88
Unknown	639	95	71	473	106	105
TOTAL	119,991	1,178	35,878	82,935	1,294	52,411

Table 3 – 3
Weather Conditions

Type of Weather Conditions	Number of Crashes				Number of Persons	
	Total	Fatal	Injury	PDO	Killed	Injured
Clear	106,313	930	31,839	73,544	1,017	46,473
Cloudy	8,333	88	2,567	5,678	98	3,769
Sleet/Hail	117	0	37	80	0	56
Rain	3,760	31	1,125	2,604	37	1,641
Snow or Blowing Snow	406	3	88	315	4	135
Severe Crosswinds	1	0	1	0	0	1
Blowing Sand, Soil, Dirt	156	0	51	105	0	80
Fog, Smog, Smoke	72	1	24	47	2	39
Other	86	2	28	56	2	44
Unknown	747	123	118	506	134	173
TOTAL	119,991	1,178	35,878	82,935	1,294	52,411

Section 3: – Crash Descriptions

Table 3 – 4
Road Surface Conditions

Type of Road Surface Condition	Number of Drivers				Number of Persons	
	Total	In Fatal Crashes	In Injury Crashes	In PDO Crashes	Killed	Injured
Dry	219,395	1,599	67,097	150,699	1,096	49,637
Wet	8,295	69	2,543	5,683	48	2,075
Snow/Slush	624	0	134	490	0	138
Ice/Frost	509	7	110	392	5	101
Water (standing or moving)	247	2	72	173	1	68
Mud, Dirt, Gravel, Sand	485	12	198	275	11	249
Other	77	1	25	51	1	18
Unknown	3,421	143	517	2,761	132	125
TOTAL	233,053	1,833	70,696	160,524	1,294	52,411

Table 3 – 5
Roadway Grade

Type of Roadway Grade	Number of Drivers				Number of Persons	
	Total	In Fatal Crashes	In Injury Crashes	In PDO Crashes	Killed	Injured
Level	217,655	1,493	65,950	150,212	1,012	48,589
Downhill	6,750	118	2,364	4,268	99	2,114
Uphill	5,583	83	1,849	3,651	55	1,564
Hillcrest	6	0	0	6	0	0
Sag/Dip/Bottom	3	0	1	2	0	1
Unknown	3,056	139	532	2,385	128	143
TOTAL	233,053	1,833	70,696	160,524	1,294	52,411

Table 3 – 6
Roadway Alignment

Type of Roadway Alignment	Number of Drivers				Number of Persons	
	Total	In Fatal Crashes	In Injury Crashes	In PDO Crashes	Killed	Injured
Straight	217,360	1,486	66,403	149,471	988	48,719
Curve Left	6,256	119	1,893	4,244	101	1,859
Curve Right	5,924	91	1,775	4,058	79	1,632
Unknown	3,513	137	625	2,751	126	201
TOTAL	233,053	1,833	70,696	160,524	1,294	52,411

Section 3: – Crash Descriptions

Chart 3 – 1

All Crashes vs. Fatal Crashes by Time of Day - Weekdays

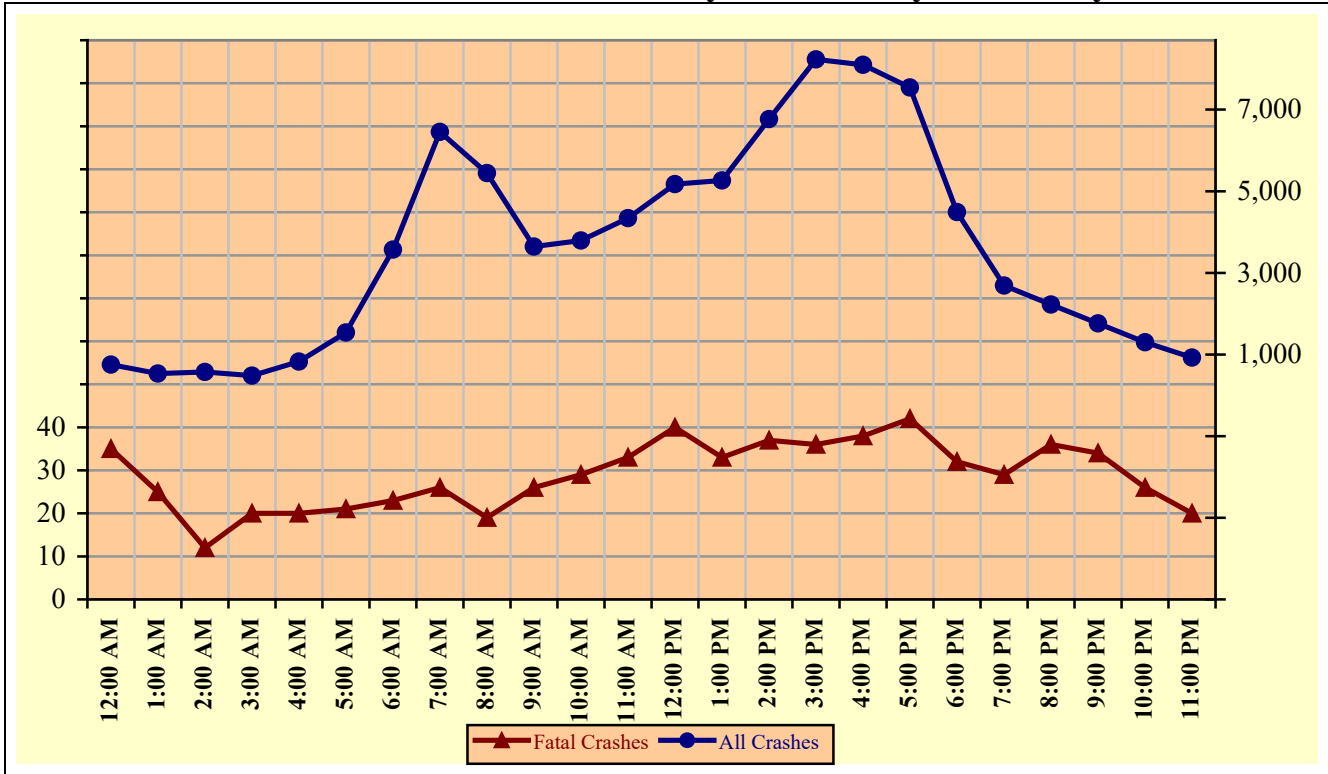
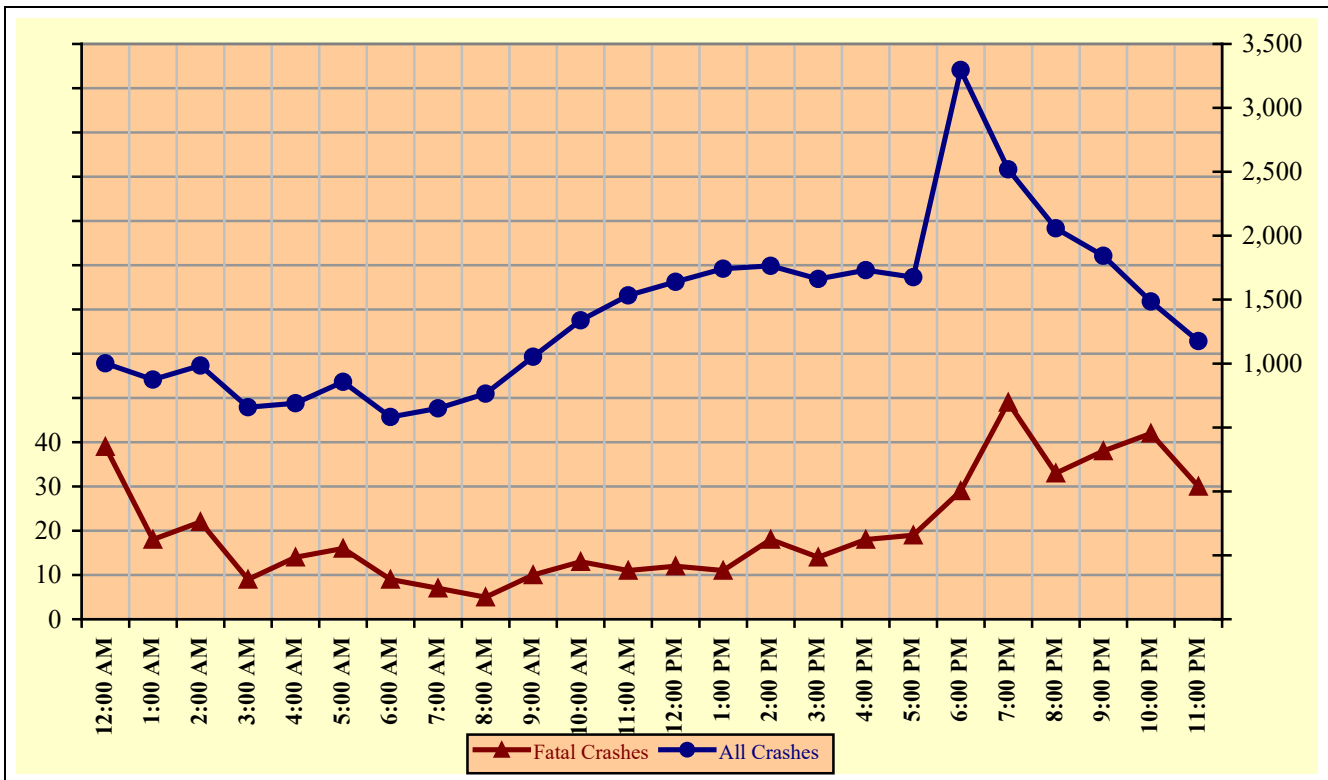


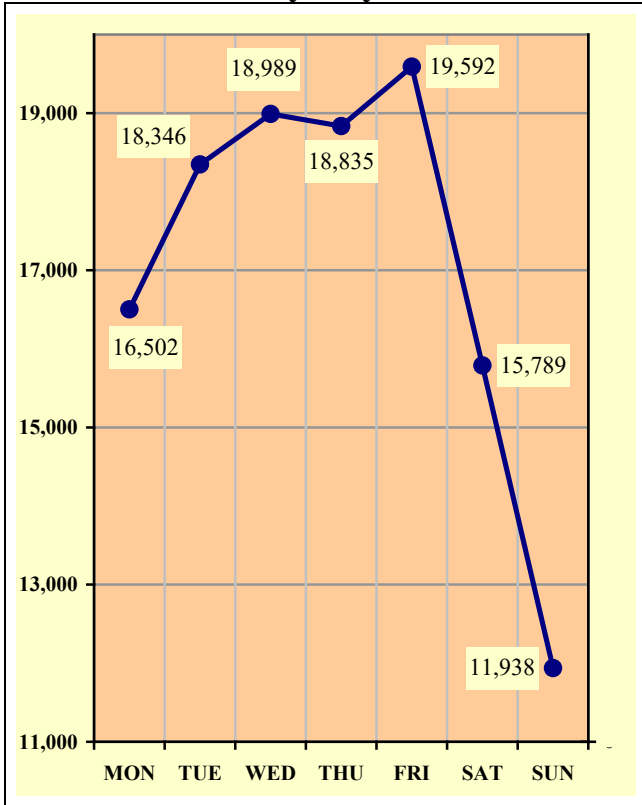
Chart 3 – 2

All Crashes vs. Fatal Crashes by Time of Day - Weekends

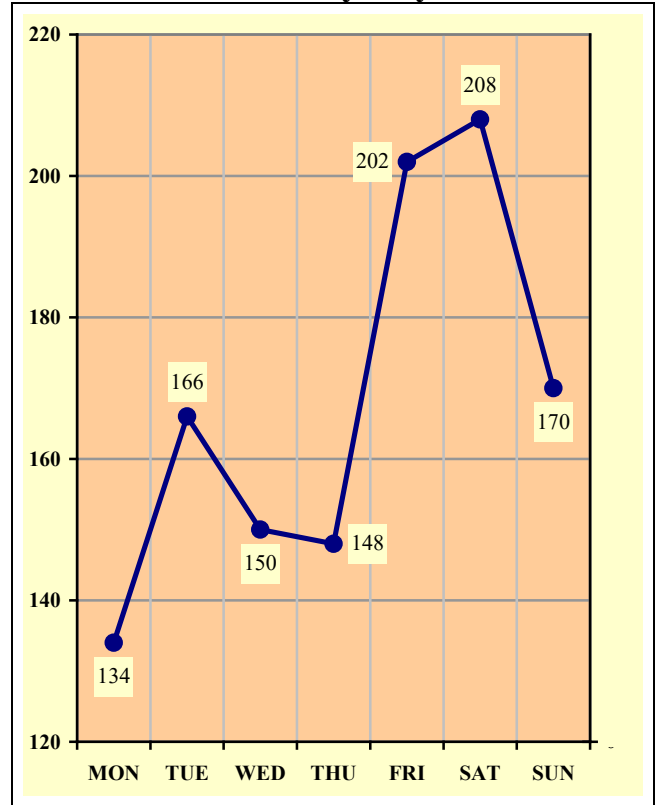


Section 3: – Crash Descriptions

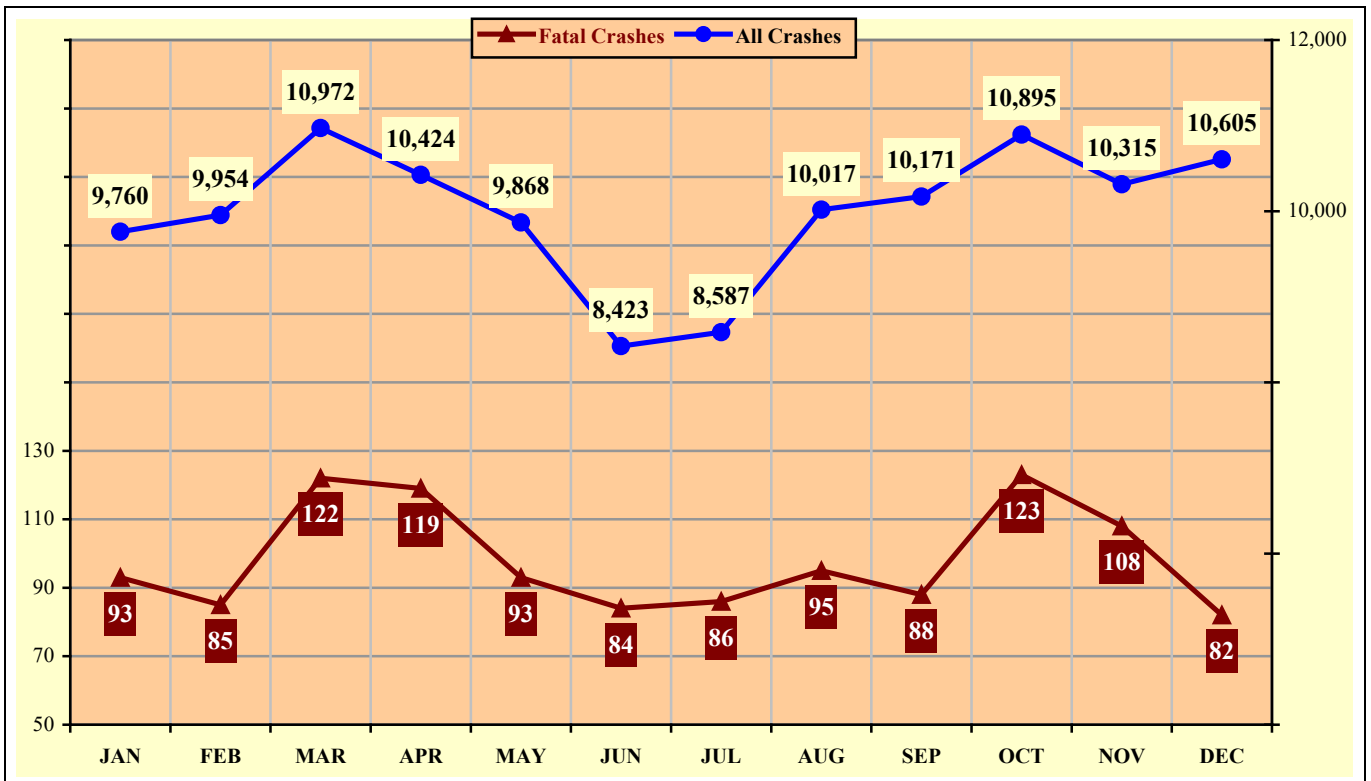
**Chart 3 – 3
Crashes by Day of Week**



**Chart 3 – 4
Fatal Crashes by Day of Week**



**Chart 3 – 5
All Crashes vs. Fatal Crashes by Month**

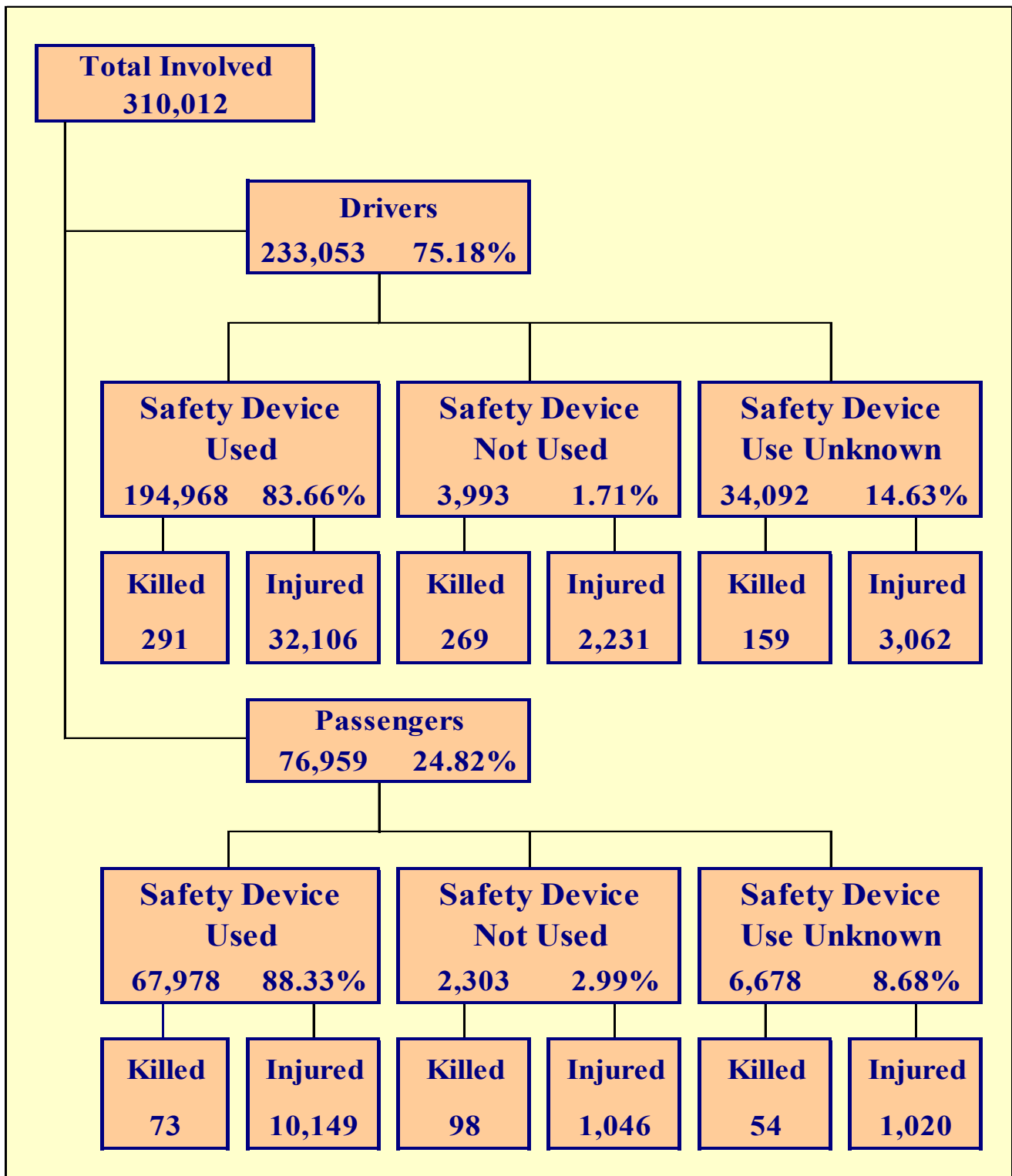


Section 3: – Crash Descriptions

Table 3 – 7
Crashes by Hour and Day of Week

Hour Beginning	Total Crashes		Monday		Tuesday		Wednesday		Thursday		Friday		Saturday		Sunday		Weekdays		Weekends	
	All	Fatal	All	Fatal	All	Fatal	All	Fatal	All	Fatal	All	Fatal	All	Fatal	All	Fatal	All	Fatal	All	Fatal
12:00 AM	1,754	74	231	13	190	8	180	9	187	8	195	10	369	10	402	16	752	35	1,002	39
1:00 AM	1,408	43	162	0	118	6	130	6	126	8	160	5	348	10	364	8	534	25	874	18
2:00 AM	1,557	34	171	4	132	3	131	1	155	3	154	5	408	9	406	9	572	12	985	22
3:00 AM	1,142	29	122	4	108	9	100	3	121	2	155	6	255	3	281	2	484	20	658	9
4:00 AM	1,516	34	201	7	207	5	214	5	211	5	194	5	253	6	236	1	826	20	690	14
5:00 AM	2,395	37	383	4	384	6	393	5	387	2	374	8	262	5	212	7	1,538	21	857	16
6:00 AM	4,152	32	624	3	758	4	816	6	710	8	662	2	312	6	270	3	3,570	23	582	9
7:00 AM	7,104	33	1,158	1	1,415	6	1,477	6	1,354	8	1,050	5	384	2	266	5	6,454	26	650	7
8:00 AM	6,208	24	932	2	1,228	4	1,216	4	1,170	3	898	6	468	3	296	2	5,444	19	764	5
9:00 AM	4,696	36	664	3	755	7	761	1	795	6	668	9	625	6	428	4	3,643	26	1,053	10
10:00 AM	5,129	42	722	4	725	6	766	8	764	4	814	7	796	9	542	4	3,791	29	1,338	13
11:00 AM	5,873	44	784	7	813	6	924	6	869	6	950	8	926	5	607	6	4,340	33	1,533	11
12:00 PM	6,815	52	963	8	1,037	4	1,046	8	945	6	1,185	14	918	4	721	8	5,176	40	1,639	12
1:00 PM	7,005	44	904	5	990	5	1,158	10	1,022	7	1,189	6	1,057	8	685	3	5,263	33	1,742	11
2:00 PM	8,529	55	1,220	4	1,364	12	1,408	5	1,286	6	1,487	10	1,010	10	754	8	6,765	37	1,764	18
3:00 PM	9,894	50	1,513	10	1,648	10	1,690	8	1,628	3	1,753	5	989	11	673	3	8,232	36	1,662	14
4:00 PM	9,829	56	1,443	8	1,652	8	1,583	7	1,737	6	1,684	9	973	8	757	10	8,099	38	1,730	18
5:00 PM	9,217	61	1,365	13	1,583	6	1,546	9	1,607	8	1,440	6	943	12	733	7	7,541	42	1,676	19
6:00 PM	7,785	61	977	6	1,129	13	1,192	8	1,191	5	1,332	13	1,119	6	845	10	4,489	32	3,296	29
7:00 PM	5,207	78	601	8	651	10	670	4	766	7	942	18	873	18	704	13	2,688	29	2,519	49
8:00 PM	4,282	69	482	4	519	9	584	8	639	15	765	11	720	11	573	11	2,224	36	2,058	33
9:00 PM	3,606	72	410	4	436	6	426	10	491	14	645	12	684	17	514	9	1,763	34	1,843	38
10:00 PM	2,788	68	282	6	268	8	351	9	401	3	483	15	606	13	397	14	1,302	26	1,486	42
11:00 PM	2,100	50	188	6	236	5	227	4	273	5	413	7	491	16	272	7	924	20	1,176	30
TOTAL	119,991	1,178	16,502	134	18,346	166	18,989	150	18,835	148	19,592	202	15,789	208	11,938	170	86,414	692	33,577	486

Crashes during Weekends accounted for 27.98% of all crashes and 41.26% of Fatal Crashes.



Section 4: – Safety Devices

**Table 4 – 1
Child Safety Device Usage (less than five years old)**

Severity of Injury	Safety Device Used	Percent of Safety Device Used	Safety Device Not Used	Percent of Safety Device Not Used	Safety Device Use Unknown	Percent of Unknown
No Injury	7,632	90.23%	67	53.60%	205	71.68%
Unknown Injury	190	2.25%	5	4.00%	38	13.29%
Possible Injury	424	5.01%	18	14.40%	23	8.04%
Suspected Minor Injury	182	2.15%	18	14.40%	11	3.85%
Suspected Serious Injury	25	0.30%	14	11.20%	5	1.75%
Fatal Injury	5	0.06%	3	2.40%	4	1.40%
TOTALS	8,458	100.00%	125	100.00%	286	100.00%

**Table 4 – 2
Driver Safety Device Usage**

Severity of Injury	Safety Device Used	Percent of Safety Device Used	Safety Device Not Used	Percent of Safety Device Not Used	Safety Device Use Unknown	Percent of Unknown
No Injury	159,426	81.77%	1,420	35.56%	18,928	55.52%
Unknown Injury	3,145	1.61%	73	1.83%	11,943	35.03%
Possible Injury	17,492	8.97%	607	15.20%	1,140	3.34%
Suspected Minor Injury	13,224	6.78%	1,096	27.45%	1,460	4.28%
Suspected Serious Injury	1,390	0.71%	528	13.22%	462	1.36%
Fatal Injury	291	0.15%	269	6.74%	159	0.47%
TOTALS	194,968	100.00%	3,993	100.00%	34,092	100.00%

**Table 4 – 3
Passenger Safety Device Usage**

Severity of Injury	Safety Device Used	Percent of Safety Device Used	Safety Device Not Used	Percent of Safety Device Not Used	Safety Device Use Unknown	Percent of Unknown
No Injury	56,484	83.09%	1,117	48.50%	4,761	71.29%
Unknown Injury	1,272	1.87%	42	1.82%	843	12.62%
Possible Injury	5,913	8.70%	312	13.55%	438	6.56%
Suspected Minor Injury	3,837	5.64%	481	20.89%	428	6.41%
Suspected Serious Injury	399	0.59%	253	10.99%	154	2.31%
Fatal Injury	73	0.11%	98	4.26%	54	0.81%
TOTALS	67,978	100.00%	2,303	100.00%	6,678	100.00%

Section 4: – Safety Devices

**Table 4 – 4
Driver Safety Device Usage by Gender**

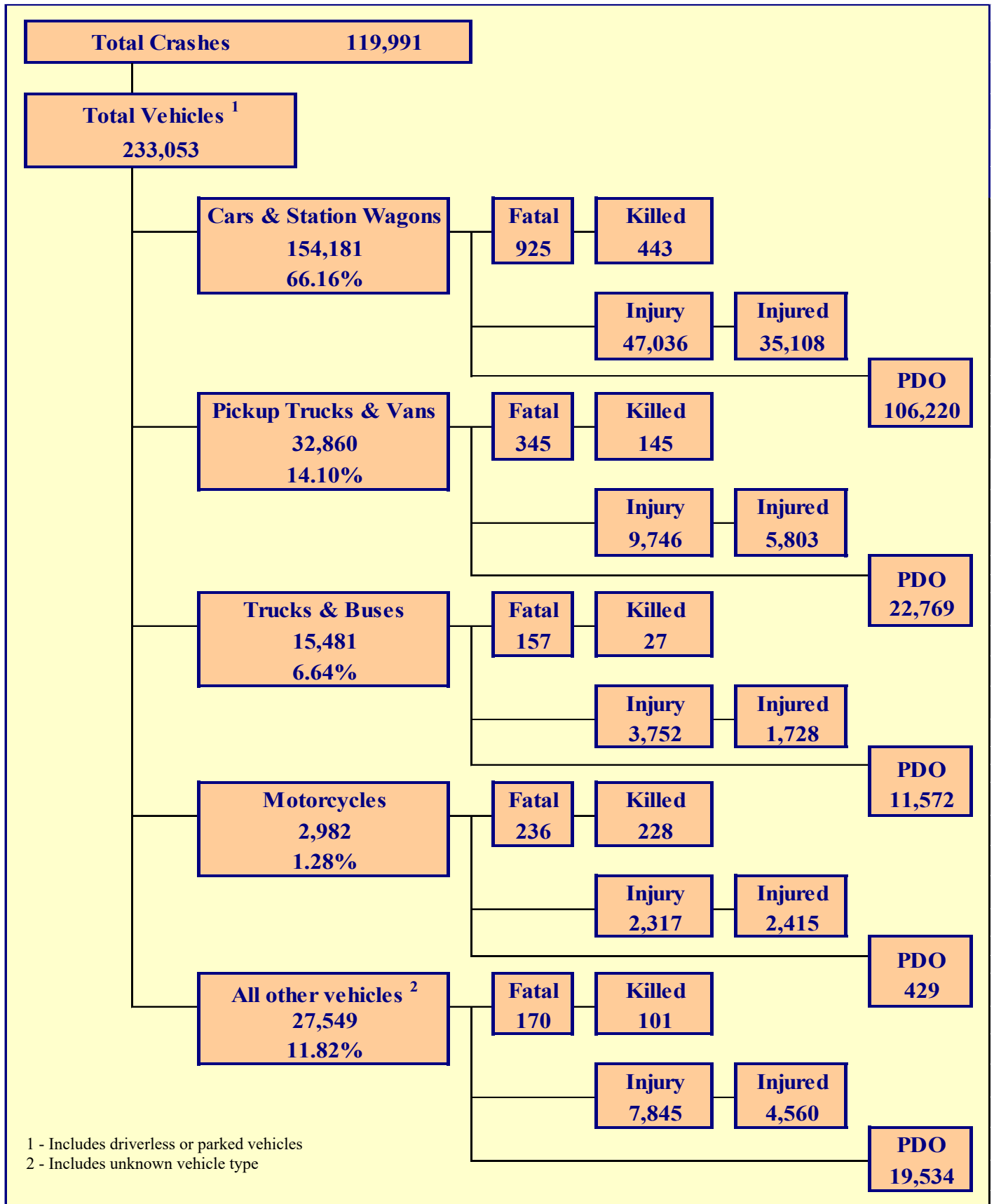
Gender of Driver	Number of Drivers							Total	Percent of Total
	Safety Device Used	Percent of Safety Device Used	Safety Device Not Used	Percent of Safety Device Not Used	Safety Device Use Unknown	Percent of Unknown			
Male	113,643	58.29%	2,928	73.33%	11,331	33.24%	127,902	54.88%	
Female	81,169	41.63%	1,032	25.85%	5,320	15.60%	87,521	37.55%	
Unknown	156	0.08%	33	0.83%	17,441	51.16%	17,630	7.56%	
TOTAL	194,968	100.00%	3,993	100.00%	34,092	100.00%	233,053	100.00%	

**Table 4 – 5
Driver Safety Device Usage by Age**

Driver Age Group	Number of Drivers							Total	Percent of Total
	Safety Device Used	Percent of Safety Device Used	Safety Device Not Used	Percent of Safety Device Not Used	Safety Device Use Unknown	Percent of Unknown			
15 & Under	337	0.17%	30	0.75%	69	0.20%	436	0.19%	
16	3,248	1.67%	56	1.40%	211	0.62%	3,515	1.51%	
17	4,478	2.30%	87	2.18%	260	0.76%	4,825	2.07%	
18	5,592	2.87%	143	3.58%	351	1.03%	6,086	2.61%	
19	5,740	2.94%	141	3.53%	388	1.14%	6,269	2.69%	
20	5,666	2.91%	115	2.88%	404	1.19%	6,185	2.65%	
21	5,750	2.95%	136	3.41%	438	1.28%	6,324	2.71%	
22	5,639	2.89%	129	3.23%	432	1.27%	6,200	2.66%	
23	5,174	2.65%	94	2.35%	407	1.19%	5,675	2.44%	
24	5,077	2.60%	128	3.21%	358	1.05%	5,563	2.39%	
25-34	43,915	22.52%	1,033	25.87%	3,693	10.83%	48,641	20.87%	
35-44	33,305	17.08%	703	17.61%	2,702	7.93%	36,710	15.75%	
45-54	26,692	13.69%	479	12.00%	2,095	6.15%	29,266	12.56%	
55-64	22,353	11.46%	359	8.99%	1,681	4.93%	24,393	10.47%	
65-74	13,492	6.92%	202	5.06%	910	2.67%	14,604	6.27%	
75 & Older	7,768	3.98%	88	2.20%	511	1.50%	8,367	3.59%	
Unknown	742	0.38%	70	1.75%	19,182	56.27%	19,994	8.58%	
TOTAL	194,968	100.00%	3,993	100.00%	34,092	100.00%	233,053	100.00%	

Section 5

Motor Vehicle and Driver Descriptions



Section 5: – Motor Vehicle and Driver Descriptions

Table 5 – 1

Arizona Motor Vehicle Registrations

Privately Owned Vehicles	5,867,498
Commercial Vehicles	386,135
Motorcycles	290,103
Mopeds	221
Other	157,511
TOTAL	6,701,468
Source: MVD - Currently Registered Vehicles by County Listing, dated 12/31/2022.	

Table 5 – 2

Motor Vehicle Crash Involvement by Vehicle Type

Motor Vehicle Type	Number of Vehicles				
	Total	Percent of Total	In Fatal Crashes	In Injury Crashes	In PDO Crashes
Passenger Cars (Sedans, Convertibles, etc.)	103,492	44.407%	560	31,419	71,513
Station Wagons	50,689	21.750%	365	15,617	34,707
Pickup Trucks	29,005	12.446%	298	8,620	20,087
Vans	3,855	1.654%	47	1,126	2,682
Truck Tractor (with or without Semi-Trailer)	2,760	1.184%	111	662	1,987
Concrete Mixer Trucks	36	0.015%	2	13	21
Dump Trucks	138	0.059%	7	30	101
Garbage Trucks	101	0.043%	2	16	83
Tanker Trucks	33	0.014%	0	6	27
Wrecker or Tow Trucks	43	0.018%	1	10	32
Other Truck Combinations	11,648	4.998%	29	2,849	8,770
School Bus	64	0.027%	1	10	53
Commercial or Non-Commercial Bus	658	0.282%	4	156	498
Motorcycle (two or three wheel)	2,982	1.280%	236	2,317	429
All Terrain Vehicle or Cycle	161	0.069%	21	109	31
Golf Carts	78	0.033%	3	50	25
Moped	41	0.018%	2	35	4
Recreational Vehicle	265	0.114%	2	54	209
Motor Home or House Car	63	0.027%	4	17	42
Fire Trucks	48	0.021%	1	7	40
Ambulances	56	0.024%	2	15	39
Other Types Of Vehicles	42	0.018%	0	11	31
Vehicle Type Unknown	26,795	11.497%	135	7,547	19,113
TOTAL	233,053	100.00%	1,833	70,696	160,524

Section 5: – Motor Vehicle and Driver Descriptions

Table 5 – 3

Hit and Run Drivers Involved in Crashes

Hit and Run	Number of Crashes				Number of Persons	
	Total	Fatal	Injury	PDO	Killed	Injured
Yes	15,874	108	2,924	12,842	109	3,660
No	104,117	1,070	32,954	70,093	1,185	48,751
TOTAL	119,991	1,178	35,878	82,935	1,294	52,411

Table 5 – 4

Gender of Drivers Involved in Crashes

Gender of Driver	Number of Drivers							
	Total	Percent of Total	In Fatal Crashes	Percent of Fatal	In Injury Crashes	Percent of Injury	In PDO Crashes	Percent of PDO
Male	127,902	54.88%	1,254	68.41%	39,616	56.04%	87,032	54.22%
Female	87,521	37.55%	441	24.06%	28,212	39.91%	58,868	36.67%
Unknown	17,630	7.56%	138	7.53%	2,868	4.06%	14,624	9.11%
TOTAL	233,053	100.00%	1,833	100.00%	70,696	100.00%	160,524	100.00%

Table 5 – 5

License Status of Drivers Involved in Crashes

License Status of Driver	Number of Drivers							
	Total	Percent of Total	In Fatal Crashes	Percent of Fatal	In Injury Crashes	Percent of Injury	In PDO Crashes	Percent of PDO
Arizona License	158,556	68.03%	1,245	67.92%	50,509	71.45%	106,802	66.53%
All Others*	74,497	31.97%	588	32.08%	20,187	28.55%	53,722	33.47%
TOTAL	233,053	100.00%	1,833	100.00%	70,696	100.00%	160,524	100.00%

*Includes drivers that have a suspended, revoked, out-of-state or country license, as well as drivers with no license or unknown license type

Table 5 – 6

Passengers Killed and Injured by Age and Gender

Age of Passenger	Passengers Killed			Passengers Injured			
	Total	Male	Female	Total	Male	Female	Gender Unknown
0-4	11	6	5	551	278	273	0
5-9	10	5	5	879	423	456	0
10-14	8	3	5	1,086	507	579	0
15-19	25	14	11	1,800	731	1,069	0
20-24	23	14	9	1,353	542	811	0
25-34	34	11	23	1,777	725	1,052	0
35-44	39	22	17	1,222	449	773	0
45-54	20	8	12	1,041	297	744	0
55-64	23	11	12	943	258	685	0
65-74	17	5	12	727	172	555	0
75 & Older	14	6	8	564	139	425	0
Unknown	1	1	0	272	112	137	23
TOTAL	225	106	119	12,215	4,633	7,559	23

Section 5: – Motor Vehicle and Driver Descriptions

Table 5 – 7

Drivers and Passengers Killed and Injured by Vehicle Type

Motor Vehicle Type	Number of Drivers		Number of Passengers	
	Killed	Injured	Killed	Injured
Passenger Cars (Sedans, Convertibles, etc.)	191	17,800	82	5,689
Station Wagons	111	8,473	59	3,146
Pickup Trucks	91	3,739	31	1,217
Vans	10	542	13	305
Truck Tractor (with or without Semi-Trailer)	16	201	2	54
Concrete Mixer Trucks	0	4	0	0
Dump Trucks	1	7	0	0
Garbage Trucks	0	3	0	2
Tanker Trucks	0	0	0	0
Wrecker or Tow Trucks	0	0	0	0
Other Truck Combinations	7	1,007	0	340
School Bus	0	2	1	21
Commercial or Non-Commercial Bus	0	27	0	60
Motorcycle (two or three wheel)	218	2,258	10	157
All Terrain Vehicle or Cycle	18	94	2	50
Golf Carts	2	41	1	15
Moped	2	35	0	3
Recreational Vehicle	0	28	0	13
Motor Home or House Car	2	4	3	3
Fire Trucks	0	0	0	1
Ambulances	1	4	0	9
Other Types Of Vehicles	0	8	0	1
Vehicle Type Unknown	49	3,122	21	1,129
TOTAL	719	37,399	225	12,215

Table 5 – 8

Drivers Killed and Injured by Age and Gender

Age of Driver	Drivers Killed				Drivers Injured			
	Total	Male	Female	Gender Unknown	Total	Male	Female	Gender Unknown
0-4	0	0	0	0	0	0	0	0
5-9	2	2	0	0	2	2	0	0
10-14	0	0	0	0	29	24	5	0
15-19	46	39	7	0	3,183	1,679	1,504	0
20-24	63	52	11	0	5,071	2,722	2,349	0
25-34	134	102	32	0	8,521	4,667	3,854	0
35-44	113	90	23	0	6,298	3,351	2,947	0
45-54	102	87	15	0	5,217	2,785	2,432	0
55-64	100	77	23	0	4,443	2,371	2,072	0
65-74	98	74	24	0	2,790	1,553	1,237	0
75 & Older	55	42	13	0	1,682	906	776	0
Unknown	6	3	0	3	163	79	41	43
TOTAL	719	568	148	3	37,399	20,139	17,217	43

Section 5: – Motor Vehicle and Driver Descriptions

**Table 5 – 9
Licensed Drivers in Arizona by Age**

Driver Age Group	Male Number	Percent of Male	Female Number	Percent of Female	Unknown Number	Total Number	Percent of Total	Cumulative Percent
16	14,652	0.50%	13,693	0.47%	28	28,373	0.49%	0.49%
17	24,474	0.84%	22,766	0.79%	36	47,276	0.81%	1.30%
18	32,785	1.12%	29,457	1.02%	21	62,263	1.07%	2.38%
19	37,499	1.28%	34,427	1.19%	5	71,931	1.24%	3.61%
20	40,053	1.37%	37,108	1.29%	4	77,165	1.33%	4.94%
21	42,611	1.46%	39,890	1.38%	6	82,507	1.42%	6.36%
22	45,827	1.57%	42,710	1.48%	6	88,543	1.52%	7.89%
23	46,464	1.59%	43,331	1.50%	5	89,800	1.55%	9.44%
24	47,744	1.63%	44,723	1.55%	8	92,475	1.59%	11.03%
25-34	522,838	17.88%	497,960	17.27%	40	1,020,838	17.58%	28.61%
35-44	507,695	17.37%	493,109	17.11%	18	1,000,822	17.24%	45.84%
45-54	493,815	16.89%	469,162	16.27%	11	962,988	16.58%	62.43%
55-64	487,900	16.69%	483,795	16.78%	14	971,709	16.73%	79.16%
65-74	345,300	11.81%	379,212	13.15%	2	724,514	12.48%	91.64%
75 & older	233,897	8.00%	251,426	8.72%	1	485,324	8.36%	100.00%
TOTALS	2,923,554	100.00%	2,882,769	100.00%	205	5,806,528	100.00%	100.00%

Source: MVD - Point-in-Time Driver Credential Report/All Driver Licenses by Age, Gender, and Class, dated 12/31/2022.

**Table 5 – 10
Driver Involvement by Age**

Driver Age Group	Number of Drivers							
	Total	Percent of Total	In Fatal Crashes	Percent of Fatal	In Injury Crashes	Percent of Injury	In PDO Crashes	Percent of PDO
15 & Under	436	0.19%	7	0.38%	153	0.22%	276	0.17%
16	3,515	1.51%	13	0.71%	986	1.39%	2,516	1.57%
17	4,825	2.07%	20	1.09%	1,401	1.98%	3,404	2.12%
18	6,086	2.61%	34	1.85%	1,728	2.44%	4,324	2.69%
19	6,269	2.69%	35	1.91%	1,899	2.69%	4,335	2.70%
20	6,185	2.65%	42	2.29%	1,894	2.68%	4,249	2.65%
21	6,324	2.71%	47	2.56%	1,929	2.73%	4,348	2.71%
22	6,200	2.66%	28	1.53%	1,986	2.81%	4,186	2.61%
23	5,675	2.44%	30	1.64%	1,771	2.51%	3,874	2.41%
24	5,563	2.39%	36	1.96%	1,767	2.50%	3,760	2.34%
25-34	48,641	20.87%	351	19.15%	15,250	21.57%	33,040	20.58%
35-44	36,710	15.75%	295	16.09%	11,643	16.47%	24,772	15.43%
45-54	29,266	12.56%	235	12.82%	9,372	13.26%	19,659	12.25%
55-64	24,393	10.47%	226	12.33%	7,824	11.07%	16,343	10.18%
65-74	14,604	6.27%	177	9.66%	4,865	6.88%	9,562	5.96%
75 & Older	8,367	3.59%	103	5.62%	2,803	3.96%	5,461	3.40%
Unknown	19,994	8.58%	154	8.40%	3,425	4.84%	16,415	10.23%
TOTAL	233,053	100.00%	1,833	100.00%	70,696	100.00%	160,524	100.00%

Section 5: – Motor Vehicle and Driver Descriptions

Table 5 – 11
Driver Violations

Type of Violation or Behavior	Number of Drivers							
	Total	Percent of Total	In Fatal Crashes	Percent of Fatal	In Injury Crashes	Percent of Injury	In PDO Crashes	Percent of PDO
No Improper Action	114,387	49.08%	752	41.03%	35,274	49.90%	78,361	48.82%
Speed too Fast for Conditions	34,639	14.86%	183	9.98%	11,318	16.01%	23,138	14.41%
Exceeded Lawful Speed	793	0.34%	66	3.60%	346	0.49%	381	0.24%
Failed to Yield Right-Of-Way	21,781	9.35%	132	7.20%	7,828	11.07%	13,821	8.61%
Followed Too Closely	6,708	2.88%	10	0.55%	1,775	2.51%	4,923	3.07%
Ran Stop Sign	1,457	0.63%	16	0.87%	585	0.83%	856	0.53%
Disregarded Traffic Signal	5,593	2.40%	60	3.27%	2,422	3.43%	3,111	1.94%
Made Improper Turn	4,433	1.90%	13	0.71%	1,168	1.65%	3,252	2.03%
Drove in Opposing Lane	46	0.02%	1	0.05%	20	0.03%	25	0.02%
Drove Left of Center Line	1,245	0.53%	71	3.87%	470	0.66%	704	0.44%
Passed in No-Passing Zone	110	0.05%	3	0.16%	25	0.04%	82	0.05%
Unsafe Lane Change	9,102	3.91%	29	1.58%	1,424	2.01%	7,649	4.77%
Failed to Keep in Proper Lane	6,282	2.70%	104	5.67%	1,659	2.35%	4,519	2.82%
Crossed Median	103	0.04%	18	0.98%	55	0.08%	30	0.02%
Aggressive Driving	304	0.13%	2	0.11%	85	0.12%	217	0.14%
Wrong Way Driving	148	0.06%	21	1.15%	60	0.08%	67	0.04%
Other	5,661	2.43%	57	3.11%	1,397	1.98%	4,207	2.62%
Unknown	20,261	8.69%	295	16.09%	4,785	6.77%	15,181	9.46%
TOTAL	233,053	100.00%	1,833	100.00%	70,696	100.00%	160,524	100.00%

Table 5 – 12
Driver Physical Condition

Type of Condition	Number of Drivers							
	Total	Percent of Total	In Fatal Crashes	Percent of Fatal	In Injury Crashes	Percent of Injury	In PDO Crashes	Percent of PDO
No Apparent Influence	201,178	86.32%	964	52.59%	61,676	87.24%	138,538	86.30%
Alcohol	5,395	2.31%	164	8.95%	2,260	3.20%	2,971	1.85%
Illegal Drugs	567	0.24%	46	2.51%	248	0.35%	273	0.17%
Medications	147	0.06%	5	0.27%	70	0.10%	72	0.04%
Marijuana	154	0.07%	20	1.09%	71	0.10%	63	0.04%
Illness or Physical Impairment	740	0.32%	10	0.55%	383	0.54%	347	0.22%
Fell Asleep or Fatigued	1,525	0.65%	10	0.55%	605	0.86%	910	0.57%
Other	635	0.27%	15	0.82%	220	0.31%	400	0.25%
Unknown	22,712	9.75%	599	32.68%	5,163	7.30%	16,950	10.56%
TOTAL	233,053	100.00%	1,833	100.00%	70,696	100.00%	160,524	100.00%

Section 5: – Motor Vehicle and Driver Descriptions

Table 5 – 13

Distracted Driving Behavior

Type of Distraction	Number of Drivers							
	Total	Percent of Total	In Fatal Crashes	Percent of Fatal	In Injury Crashes	Percent of Injury	In PDO Crashes	Percent of PDO
Not Distracted	174,268	74.78%	821	44.79%	53,521	75.71%	119,926	74.71%
Talking on Hands Free Device	200	0.09%	2	0.11%	68	0.10%	130	0.08%
Talking on Hand Held Device	286	0.12%	2	0.11%	89	0.13%	195	0.12%
Passenger	595	0.26%	6	0.33%	212	0.30%	377	0.23%
Other Activity with an Electronic Device	1,101	0.47%	1	0.05%	395	0.56%	705	0.44%
Manually Operating an Electronic Device	602	0.26%	4	0.22%	195	0.28%	403	0.25%
Other Inside the Vehicle (eating, drinking, etc.)	2,269	0.97%	8	0.44%	727	1.03%	1,534	0.96%
Outside the Vehicle (includes unspecified distractions)	1,803	0.77%	9	0.49%	655	0.93%	1,139	0.71%
Distracted Unknown Reason	2,120	0.91%	11	0.60%	682	0.96%	1,427	0.89%
Unknown	49,809	21.37%	969	52.86%	14,152	20.02%	34,688	21.61%
TOTAL	233,053	100.00%	1,833	100.00%	70,696	100.00%	160,524	100.00%

Table 5 – 14

Secondary Crashes

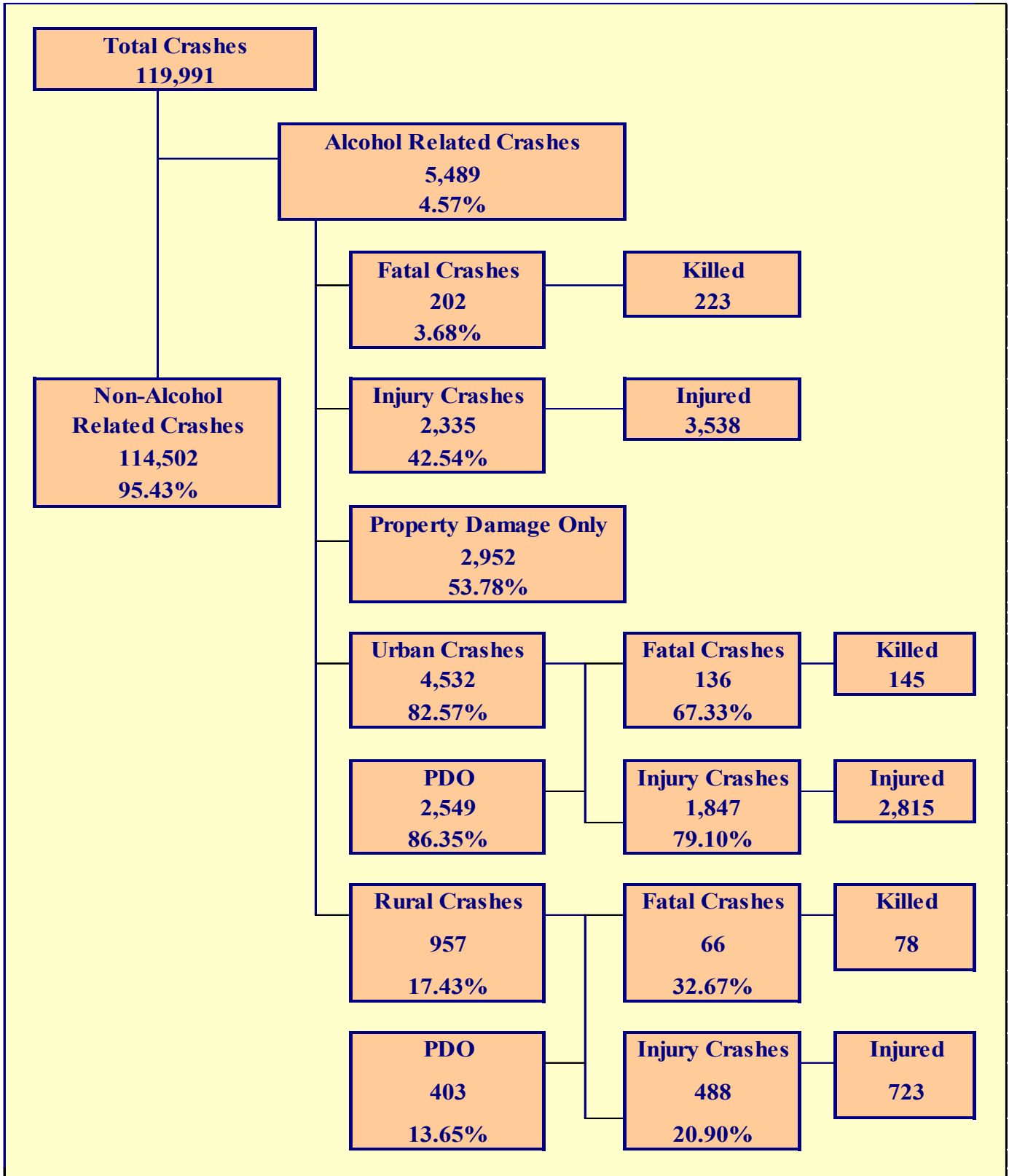
Secondary Crash	Number of Crashes				Number of Persons	
	Total	Fatal	Injury	PDO	Killed	Injured
Yes	1,593	15	555	1,023	18	954
No	111,044	1,121	33,064	76,859	1,234	48,276
Unknown	7,354	42	2,259	5,053	42	3,181
TOTAL	119,991	1,178	35,878	82,935	1,294	52,411

Table 5 – 15

Road Rage Crashes

Road Rage	Number of Crashes				Number of Persons	
	Total	Fatal	Injury	PDO	Killed	Injured
Yes	828	6	156	666	6	206
No	119,163	1,172	35,722	82,269	1,288	52,205
TOTAL	119,991	1,178	35,878	82,935	1,294	52,411

Note: Road Rage data is incomplete due to some agencies using older versions of the crash report.



Section 6: – Alcohol Related Crashes

The statistics in the Alcohol Related section represent those crashes where the investigating officer indicated that a driver, pedestrian, or bicyclist had been drinking an alcoholic beverage and may or may not be substantiated by a blood or breath test. No assumption is to be made that the person was legally intoxicated (blood alcohol content of 0.08% or higher) at the time of the crash.

**Table 6 – 1
Economic Loss Due to Alcohol Related Crashes in Arizona for 2022**

Fatalities	\$2,121,927,733
Suspected Serious Injuries	\$296,168,462
Suspected Minor Injuries	\$247,559,120
Possible Injuries	\$138,214,300
Property Damage Only	\$31,527,360
TOTAL	\$2,835,396,975

Refer to note on Page 4 for Economic Loss Estimates

**Table 6 – 2
Alcohol Related Crash History**

Year	Alcohol Related Crashes	Percent of all Crashes	Persons Killed	Percent of all Fatalities	Persons Injured	Percent of all Injuries
2018	4,705	3.68%	265	26.21%	3,014	5.61%
2019	4,984	3.80%	258	26.33%	3,024	5.56%
2020	4,571	4.61%	229	21.73%	2,895	6.97%
2021	5,636	4.64%	253	21.22%	3,617	6.99%
2022	5,489	4.57%	223	17.23%	3,538	6.75%

**Table 6 – 3
Manner of Collision in Alcohol Related Crashes**

Manner of Collision Type	Number of Crashes							
	Total	Percent of All Crashes	Fatal	Percent of Fatal Crashes	Injury	Percent of Injury Crashes	PDO	Percent of PDO Crashes
Angle	508	15.61%	17	12.41%	243	16.67%	248	14.95%
Left Turn	349	10.73%	13	9.49%	183	12.55%	153	9.22%
Rear End	1,306	40.14%	19	13.87%	584	40.05%	703	42.37%
Head-On	257	7.90%	21	15.33%	126	8.64%	110	6.63%
Sideswipe (same)	395	12.14%	3	2.19%	106	7.27%	286	17.24%
Sideswipe (opposite)	123	3.78%	1	0.73%	39	2.67%	83	5.00%
U-Turn	17	0.52%	0	0.00%	11	0.75%	6	0.36%
Other*	284	8.73%	63	45.99%	157	10.77%	64	3.86%
Unknown	15	0.46%	0	0.00%	9	0.62%	6	0.36%
TOTAL	3,254	100.00%	137	100.00%	1,458	100.00%	1,659	100.00%

Note: Includes only multi-unit alcohol related crashes

*Other includes pedestrian and bicycle crashes

Section 6: – Alcohol Related Crashes

Table 6 – 4

Alcohol Related Crashes by First Harmful Event

First Harmful Event Type	Number of Crashes				Number of Persons	
	Total	Fatal	Injury	PDO	Killed	Injured
Collision with Motor Vehicle in Transport	2,610	75	1,206	1,329	91	2,192
Overturning	261	27	179	55	28	237
Collision with Pedestrian	164	54	110	0	54	135
Collision with Bicyclist	19	5	14	0	6	14
Collision with Animal	3	0	2	1	0	2
Collision with Fixed Object	1,946	40	696	1,210	43	805
Collision with Non-fixed Object*	478	1	124	353	1	149
Vehicle Fire or Explosion	5	0	2	3	0	2
Other Non-collision**	3	0	2	1	0	2
Unknown	0	0	0	0	0	0
TOTAL	5,489	202	2,335	2,952	223	3,538
*Includes Collision with Parked Vehicles, Trains, Railway Vehicles, and Work Zone Equipment						
**Includes Vehicle Immersion, Jackknife, and Cargo Loss or Shift						

Table 6 – 5

Alcohol Related Crashes by Vehicle Type

Motor Vehicle Type	Number of Vehicles				
	Total	Percent of Total	In Fatal Crashes	In Injury Crashes	In PDO Crashes
Passenger Cars (Sedans, Convertibles, etc.)	2,756	51.084%	53	1,115	1,588
Station Wagons	1,034	19.166%	33	435	566
Pickup Trucks	789	14.625%	42	347	400
Vans	57	1.057%	2	21	34
Truck Tractor (with or without Semi-Trailer)	7	0.130%	0	2	5
Concrete Mixer Trucks	0	0.000%	0	0	0
Dump Trucks	0	0.000%	0	0	0
Garbage Trucks	0	0.000%	0	0	0
Tanker Trucks	1	0.019%	0	0	1
Wrecker or Tow Trucks	0	0.000%	0	0	0
Other Truck Combinations	176	3.262%	0	72	104
School Bus	0	0.000%	0	0	0
Commercial or Non-Commercial Bus	1	0.019%	0	0	1
Motorcycle (two or three wheel)	114	2.113%	28	72	14
All Terrain Vehicle or Cycle	12	0.222%	4	8	0
Golf Carts	2	0.037%	0	2	0
Moped	0	0.000%	0	0	0
Recreational Vehicle	1	0.019%	0	0	1
Motor Home or House Car	1	0.019%	0	1	0
Fire Trucks	0	0.000%	0	0	0
Ambulances	0	0.000%	0	0	0
Other Types Of Vehicles	1	0.019%	0	0	1
Vehicle Type Unknown	443	8.211%	2	185	256
TOTAL	5,395	100.00%	164	2,260	2,971

Section 6: – Alcohol Related Crashes

Table 6 – 6
Lighting Conditions in Alcohol Related Crashes

Type of Lighting Conditions	Number of Crashes				Number of Persons	
	Total	Fatal	Injury	PDO	Killed	Injured
Daylight	1,578	57	691	830	66	1,044
Dawn	75	1	30	44	2	46
Dusk	156	4	72	80	4	112
Dark - Lighted	2,781	81	1,123	1,577	88	1,708
Dark - Not Lighted	856	55	403	398	59	606
Dark - Unknown Lighting	24	1	10	13	1	12
Unknown	19	3	6	10	3	10
TOTAL	5,489	202	2,335	2,952	223	3,538

Table 6 – 7
Road Surface Conditions in Alcohol Related Crashes

Type of Road Surface Condition	Number of Drivers				Number of Persons	
	Total	In Fatal Crashes	In Injury Crashes	In PDO Crashes	Killed	Injured
Dry	5,098	149	2,145	2,804	203	3,362
Wet	236	8	91	137	10	141
Snow/Slush	4	0	1	3	0	3
Ice/Frost	5	1	1	3	2	2
Water (standing or moving)	1	0	0	1	0	0
Mud, Dirt, Gravel, Sand	29	2	19	8	2	25
Other	3	0	1	2	0	2
Unknown	19	4	2	13	6	3
TOTAL	5,395	164	2,260	2,971	223	3,538

Table 6 – 8
Gender of Drivers Involved in Alcohol Related Crashes

Gender of Driver	Number of Drivers							
	Total	Percent of Total	In Fatal Crashes	Percent of Fatal	In Injury Crashes	Percent of Injury	In PDO Crashes	Percent of PDO
Male	3,846	71.29%	137	83.54%	1,612	71.33%	2,097	70.58%
Female	1,504	27.88%	26	15.85%	644	28.50%	834	28.07%
Unknown	45	0.83%	1	0.61%	4	0.18%	40	1.35%
TOTAL	5,395	100.00%	164	100.00%	2,260	100.00%	2,971	100.00%

In total crashes across the state, 54.88% of the drivers were males. When alcohol was involved, males accounted for 71.29% of the drivers.

Section 6: – Alcohol Related Crashes

**Table 6 – 9
Driver Involvement by Age in Alcohol Related Crashes**

Driver Age Group	Number of Drivers							
	Total	Percent of Total	In Fatal Crashes	Percent of Fatal	In Injury Crashes	Percent of Injury	In PDO Crashes	Percent of PDO
15 & Under	0	0.00%	0	0.00%	0	0.00%	0	0.00%
16	15	0.28%	0	0.00%	8	0.35%	7	0.24%
17	30	0.56%	0	0.00%	11	0.49%	19	0.64%
18	97	1.80%	4	2.44%	46	2.04%	47	1.58%
19	108	2.00%	3	1.83%	45	1.99%	60	2.02%
20	136	2.52%	2	1.22%	57	2.52%	77	2.59%
21	221	4.10%	6	3.66%	85	3.76%	130	4.38%
22	227	4.21%	3	1.83%	90	3.98%	134	4.51%
23	203	3.76%	3	1.83%	90	3.98%	110	3.70%
24	198	3.67%	4	2.44%	84	3.72%	110	3.70%
25-34	1,732	32.10%	52	31.71%	730	32.30%	950	31.98%
35-44	1,056	19.57%	37	22.56%	440	19.47%	579	19.49%
45-54	629	11.66%	27	16.46%	273	12.08%	329	11.07%
55-64	445	8.25%	15	9.15%	196	8.67%	234	7.88%
65-74	184	3.41%	6	3.66%	70	3.10%	108	3.64%
75 & Older	46	0.85%	1	0.61%	23	1.02%	22	0.74%
Unknown	68	1.26%	1	0.61%	12	0.53%	55	1.85%
TOTAL	5,395	100.00%	164	100.00%	2,260	100.00%	2,971	100.00%

**Table 6 – 10
When Alcohol Related Crashes Occurred in 2022**

Time of Day	Total	Weekday	Weekend*
Daytime**	1,519	945	574
Nighttime	3,970	1,507	2,463
Total	5,489	2,452	3,037
*Weekend begins at 6:00 p.m. on Friday and continues until 6:00 a.m. Monday. All other times and days are considered Weekdays.			
**Daytime refers to the hours between 6:00 a.m. and 6:00 p.m.			

**Table 6 – 11
Safety Device Usage for Drinking Drivers**

Severity of Injury	Safety Device Not Used	Lap Belt	Lap & Shoulder Belt	Protective Helmet	Other	Unknown	Totals
No Injury	145	45	2,204	5	2	1,016	3,417
Unknown Injury	9	1	55	0	0	138	203
Possible Injury	75	13	328	3	0	139	558
Suspected Minor Injury	164	11	446	12	0	238	871
Suspected Serious Injury	80	7	91	11	0	72	261
Fatal Injury	59	0	8	5	0	13	85
TOTALS	532	77	3,132	36	2	1,616	5,395

Section 6: – Alcohol Related Crashes

Table 6 – 12

Persons Killed and Injured in Alcohol Related Crashes

Age of Victim	Persons Killed			Persons Injured			
	Total	Male	Female	Total	Male	Female	Gender Unknown
0-4	2	0	2	45	22	23	0
5-9	2	2	0	43	26	17	0
10-14	2	1	1	49	22	27	0
15-19	18	12	6	252	151	101	0
20-24	19	12	7	532	329	203	0
25-34	44	30	14	972	620	352	0
35-44	43	31	12	635	403	232	0
45-54	37	33	4	447	276	171	0
55-64	35	30	5	333	200	133	0
65-74	13	11	2	149	90	59	0
75 & Older	8	7	1	48	28	20	0
Unknown	0	0	0	33	20	9	4
TOTAL	223	169	54	3,538	2,187	1,347	4

Table 6 – 13

Alcohol Related Crashes by County

County	Number of Crashes				Number of Persons	
	Total	Fatal	Injury	PDO	Killed	Injured
Apache	32	4	15	13	5	26
Cochise	48	2	17	29	2	30
Coconino	200	12	89	99	15	148
Gila	62	4	29	29	4	45
Graham	37	0	19	18	0	31
Greenlee	5	2	1	2	2	1
La Paz	16	1	10	5	1	11
Maricopa	3,423	110	1,379	1,934	120	2,122
Mohave	220	7	115	98	9	171
Navajo	91	5	51	35	7	72
Pima	645	35	270	340	37	396
Pinal	289	8	141	140	9	199
Santa Cruz	22	3	9	10	3	12
Yavapai	249	7	130	112	7	179
Yuma	150	2	60	88	2	95
TOTAL	5,489	202	2,335	2,952	223	3,538

Section 6: – Alcohol Related Crashes

Chart 6 – 1

All Alcohol Related Crashes vs. Fatal Alcohol Related Crashes by Day of Week

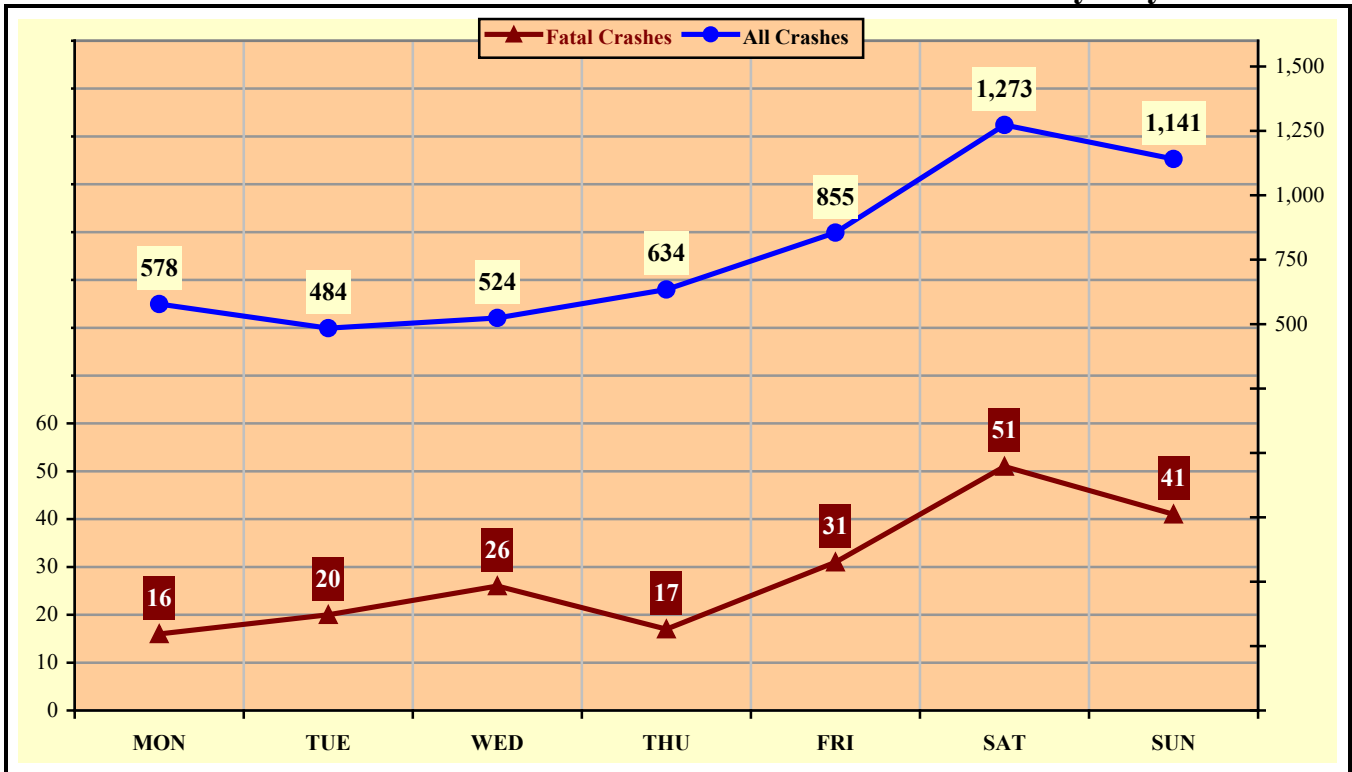
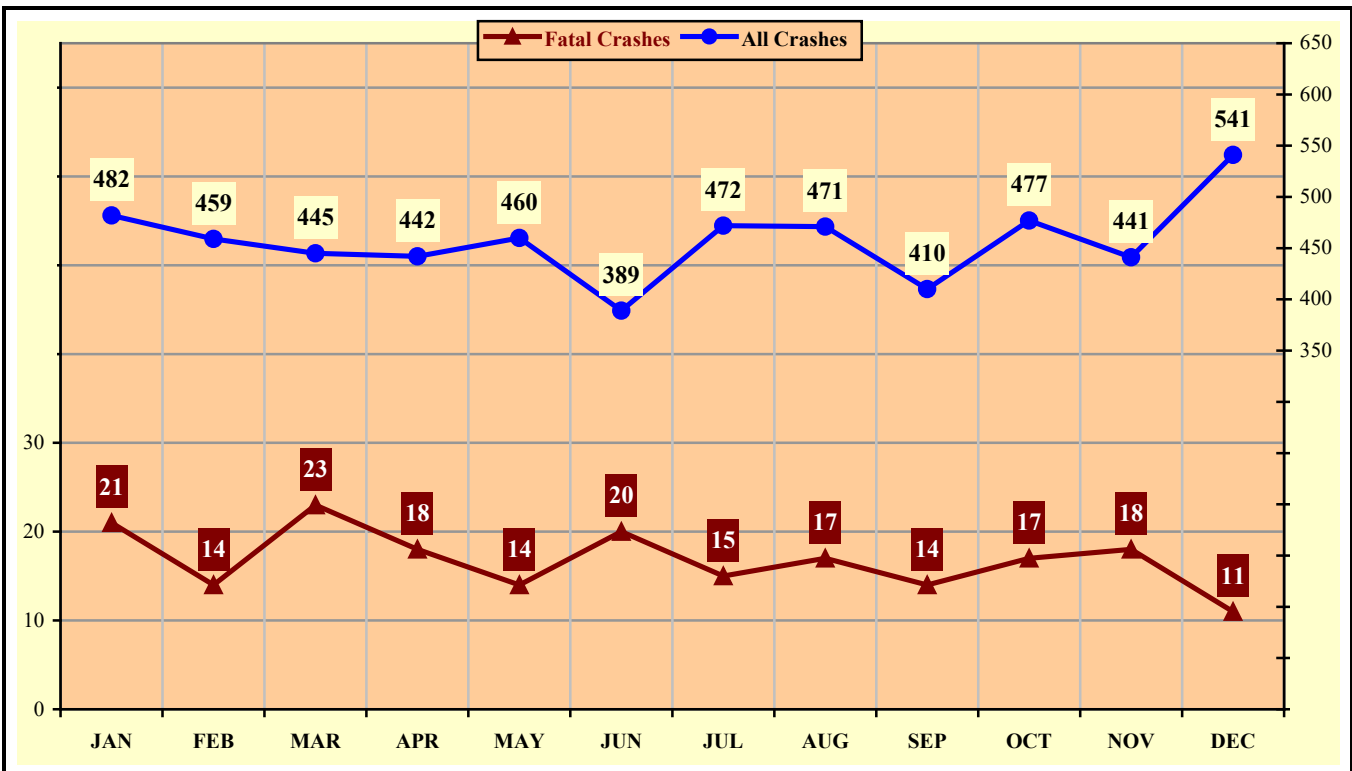


Chart 6 – 2

All Alcohol Related Crashes vs. Fatal Alcohol Related Crashes by Month



Section 6: – Alcohol Related Crashes

Chart 6 – 3

All Alcohol Related Crashes vs. Fatal Alcohol Related Crashes - Weekdays

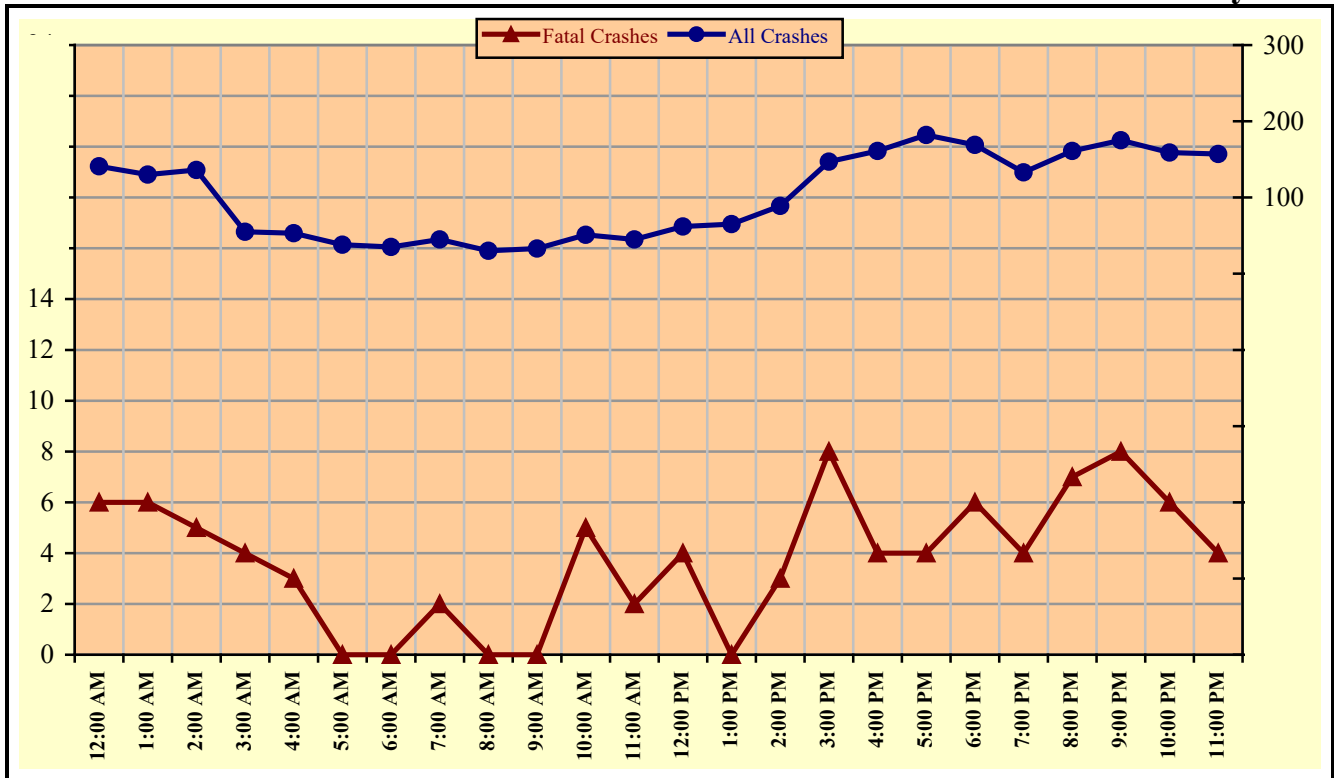
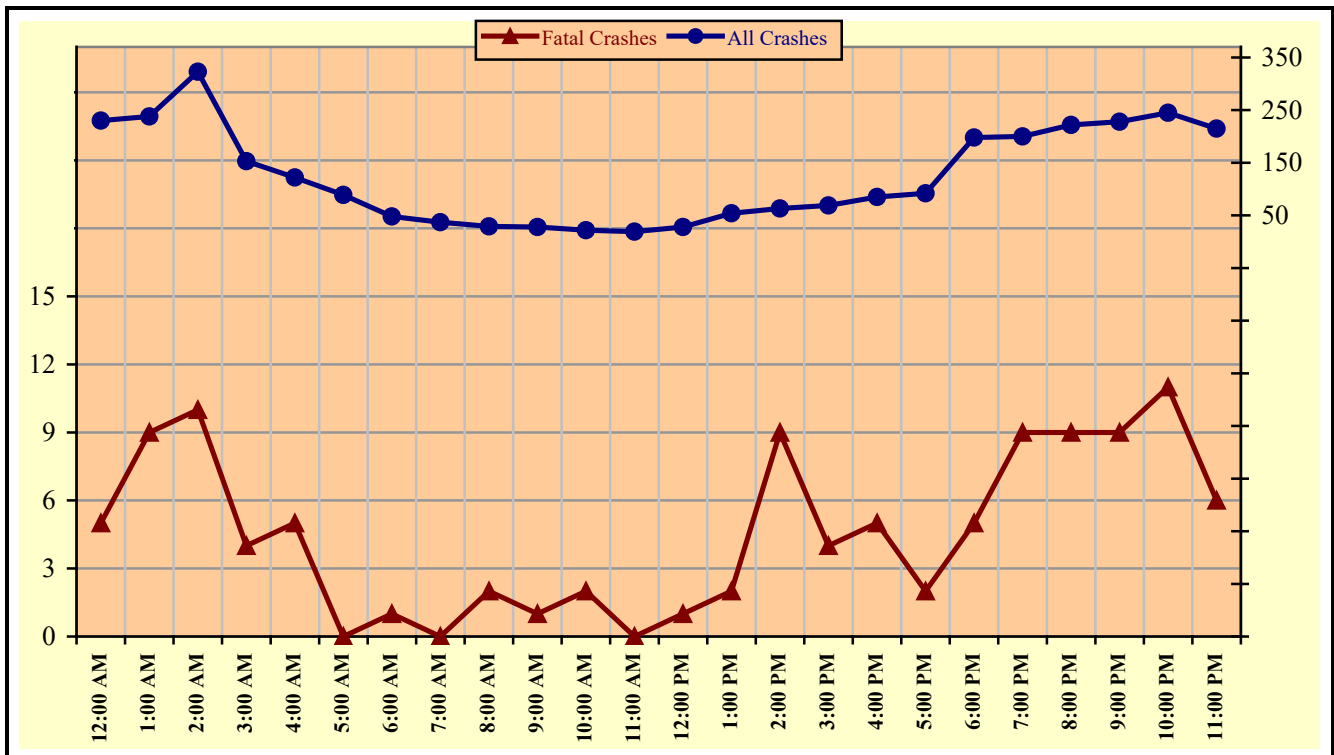


Chart 6 – 4

All Alcohol Related Crashes vs. Fatal Alcohol Related Crashes - Weekends



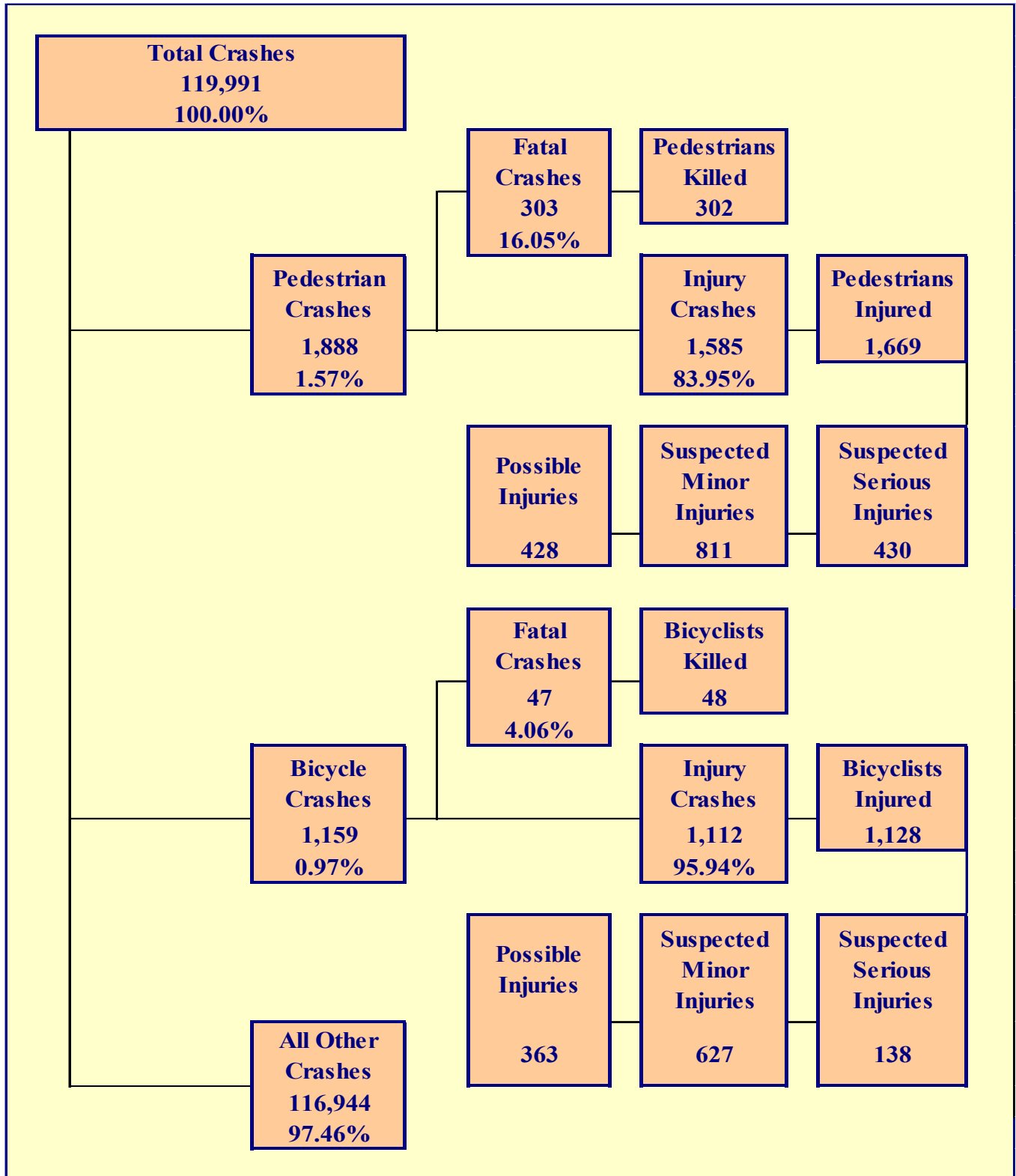
Section 6: – Alcohol Related Crashes

Table 6 – 14

Alcohol Related Crashes by Hour and Day of Week

Hour Beginning	Total Crashes		Monday		Tuesday		Wednesday		Thursday		Friday		Saturday		Sunday		Weekdays		Weekends	
	All	Fatal	All	Fatal	All	Fatal	All	Fatal	All	Fatal	All	Fatal	All	Fatal	All	Fatal	All	Fatal	All	Fatal
12:00 AM	371	11	51	2	36	1	28	0	29	3	48	2	92	2	87	1	141	6	230	5
1:00 AM	368	15	42	0	26	2	29	0	27	3	48	1	101	4	95	5	130	6	238	9
2:00 AM	459	15	51	0	23	1	36	1	30	1	47	2	126	3	146	7	136	5	323	10
3:00 AM	208	8	13	1	10	1	11	1	12	0	22	2	60	1	80	2	55	4	153	4
4:00 AM	175	8	16	1	9	0	9	0	16	2	19	1	61	4	45	0	53	3	122	5
5:00 AM	127	0	13	0	5	0	11	0	12	0	10	0	42	0	34	0	38	0	89	0
6:00 AM	83	1	9	0	3	0	7	0	8	0	8	0	24	0	24	1	35	0	48	1
7:00 AM	82	2	7	0	7	0	6	0	10	1	15	1	17	0	20	0	45	2	37	0
8:00 AM	59	2	7	0	5	0	1	0	9	0	8	0	16	2	13	0	30	0	29	2
9:00 AM	61	1	9	0	8	0	8	0	4	0	4	0	11	1	17	0	33	0	28	1
10:00 AM	73	7	9	1	12	1	10	1	12	1	8	1	13	1	9	1	51	5	22	2
11:00 AM	64	2	7	1	9	0	11	1	6	0	12	0	6	0	13	0	45	2	19	0
12:00 PM	90	5	10	1	12	1	14	1	11	0	15	1	13	0	15	1	62	4	28	1
1:00 PM	119	2	12	0	7	0	18	0	12	0	16	0	30	0	24	2	65	0	54	2
2:00 PM	152	12	16	0	18	0	12	0	20	1	23	2	34	8	29	1	89	3	63	9
3:00 PM	216	12	29	1	32	4	28	2	20	0	38	1	46	2	23	2	147	8	69	4
4:00 PM	246	9	26	0	34	1	29	1	36	0	36	2	49	3	36	2	161	4	85	5
5:00 PM	274	6	22	1	33	0	42	3	44	0	41	0	50	1	42	1	182	4	92	2
6:00 PM	367	11	51	1	30	2	35	2	53	1	68	4	74	1	56	0	169	6	198	5
7:00 PM	333	13	34	2	19	1	24	1	56	0	57	3	71	3	72	3	133	4	200	9
8:00 PM	383	16	34	0	44	2	42	2	41	3	83	2	71	4	68	3	161	7	222	9
9:00 PM	403	17	37	2	43	1	45	5	50	0	88	3	74	4	66	2	175	8	228	9
10:00 PM	404	17	40	1	27	0	38	4	54	1	65	2	103	4	77	5	159	6	245	11
11:00 PM	372	10	33	1	32	2	30	1	62	0	76	1	89	3	50	2	157	4	215	6
TOTAL	5,489	202	578	16	484	20	524	26	634	17	855	31	1,273	51	1,141	41	2,452	91	3,037	111

Crashes during Weekends accounted for 55.33% of all Alcohol Related crashes and 54.95% of Alcohol Related Fatal Crashes.



Section 7: – Pedestrian and Bicycle Crashes

Table 7 – 1

Pedestrians Killed and Injured By Age and Gender

Age Group	Pedestrians Killed			Pedestrians Injured		
	Total	Male	Female	Total	Male	Female
0-4	1	1	0	20	14	6
5-9	1	1	0	25	18	7
10-14	4	3	1	91	56	35
15-19	7	6	1	173	98	75
20-24	21	12	9	139	92	47
25-34	53	36	17	313	227	86
35-44	58	45	13	277	188	89
45-54	35	25	10	193	113	80
55-64	62	42	20	197	137	60
65-74	36	24	12	130	86	44
75 & Older	20	12	8	73	47	26
Unknown	4	1	3	38	29	9
TOTAL	302	208	94	1,669	1,105	564

Table 7 – 2

Pedestrian Crashes by Geographic Location

Category	Total	Urban	Percent of Total	Rural	Percent of Total
Total Crashes	1,888	1,753	92.85%	135	7.15%
Fatal Crashes	303	256	84.49%	47	15.51%
Injury Crashes	1,585	1,497	94.45%	88	5.55%
Pedestrians Killed	302	256	84.77%	46	15.23%
Pedestrians Injured	1,669	1,570	94.07%	99	5.93%

Table 7 – 3

Pedestrian Crash History

Year	Pedestrian Crashes	Percent of all Crashes	Pedestrians Killed	Percent of all Fatalities	Pedestrians Injured	Percent of all Injuries
2018	1,787	1.40%	245	24.23%	1,561	2.91%
2019	1,865	1.42%	218	22.24%	1,724	3.17%
2020	1,531	1.54%	235	22.30%	1,359	3.27%
2021	1,728	1.42%	260	21.81%	1,546	2.99%
2022	1,888	1.57%	302	23.34%	1,669	3.18%

Section 7: – Pedestrian and Bicycle Crashes

Table 7 – 4

Pedestrians Killed by Age and Action

Pedestrian Action	Total	Age Group of Pedestrian											
		0-4	5-9	10-14	15-19	20-24	25-34	35-44	45-54	55-64	65-74	75 & Older	Unknown
Crossing Road	176	0	1	3	4	11	25	29	19	43	24	14	3
Walking With Traffic	14	0	0	0	0	0	4	1	3	1	4	1	0
Walking Against Traffic	17	0	0	0	1	1	5	3	2	2	2	1	0
Standing	20	0	0	0	0	1	7	3	1	5	2	1	0
Lying	12	0	0	0	0	2	3	2	2	3	0	0	0
Getting on/off Vehicle	0	0	0	0	0	0	0	0	0	0	0	0	0
Working on Road	0	0	0	0	0	0	0	0	0	0	0	0	0
Other	15	0	0	0	2	1	5	4	2	1	0	0	0
Unknown	48	1	0	1	0	5	4	16	6	7	4	3	1
TOTAL	302	1	1	4	7	21	53	58	35	62	36	20	4

Table 7 – 5

Pedestrians Injured by Age and Action

Pedestrian Action	Total	Age Group of Pedestrian											
		0-4	5-9	10-14	15-19	20-24	25-34	35-44	45-54	55-64	65-74	75 & Older	Unknown
Crossing Road	1,130	12	18	76	125	90	204	183	124	129	97	50	22
Walking With Traffic	93	0	0	5	7	4	20	18	14	12	9	3	1
Walking Against Traffic	85	0	1	3	12	7	16	15	7	13	7	2	2
Standing	110	6	1	1	8	13	24	18	14	13	3	4	5
Lying	5	0	0	0	0	1	0	2	2	0	0	0	0
Getting on/off Vehicle	11	0	2	0	0	1	2	1	2	1	1	1	0
Working on Road	1	0	0	0	0	0	0	0	0	1	0	0	0
Other	168	2	2	5	16	16	30	27	26	20	9	10	5
Unknown	66	0	1	1	5	7	17	13	4	8	4	3	3
TOTAL	1,669	20	25	91	173	139	313	277	193	197	130	73	38

Table 7 – 6

Pedestrian Physical Condition in Motor Vehicle Crashes

Type of Condition	Number of Pedestrians					
	Total	Percent of Total	In Fatal Crashes	Percent of Fatal	In Injury Crashes	Percent of Injury
No Apparent Influence	1,249	63.37%	70	22.08%	1,179	71.28%
Alcohol	136	6.90%	43	13.56%	93	5.62%
Illegal Drugs	35	1.78%	19	5.99%	16	0.97%
Medications	0	0.00%	0	0.00%	0	0.00%
Marijuana	1	0.05%	0	0.00%	1	0.06%
Illness or Physical Impairment	6	0.30%	0	0.00%	6	0.36%
Fell Asleep or Fatigued	1	0.05%	1	0.32%	0	0.00%
Other	8	0.41%	1	0.32%	7	0.42%
Unknown	535	27.14%	183	57.73%	352	21.28%
TOTAL	1,971	100.00%	317	100.00%	1,654	100.00%

Section 7: – Pedestrian and Bicycle Crashes

Table 7 – 7

Lighting Conditions in Pedestrian Crashes

Type of Lighting Conditions	Number of Crashes		
	Total	Fatal	Injury
Daylight	850	46	804
Dawn	34	3	31
Dusk	68	14	54
Dark - Lighted	714	167	547
Dark - Not Lighted	184	54	130
Dark - Unknown Lighting	13	4	9
Unknown	25	15	10
TOTAL	1,888	303	1,585

Table 7 – 8

Weather Conditions in Pedestrian Crashes

Type of Weather Conditions	Number of Crashes		
	Total	Fatal	Injury
Clear	1,716	257	1,459
Cloudy	96	19	77
Sleet/Hail	4	0	4
Rain	38	5	33
Snow or Blowing Snow	2	0	2
Severe Crosswinds	0	0	0
Blowing Sand, Soil, Dirt	1	0	1
Fog, Smog, Smoke	0	0	0
Other	2	0	2
Unknown	29	22	7
TOTAL	1,888	303	1,585

Table 7 – 9

Bicyclists Killed and Injured by Age and Gender

Age Group	Bicyclists Killed			Bicyclists Injured		
	Total	Male	Female	Total	Male	Female
0-4	1	1	0	3	1	2
5-9	0	0	0	7	6	1
10-14	4	4	0	96	84	12
15-19	2	1	1	149	108	41
20-24	1	1	0	90	62	28
25-34	5	4	1	216	169	47
35-44	7	4	3	159	125	34
45-54	5	5	0	131	106	25
55-64	9	5	4	151	119	32
65-74	9	9	0	76	64	12
75 & Older	5	5	0	31	24	7
Unknown	0	0	0	19	14	5
TOTAL	48	39	9	1,128	882	246

Section 7: – Pedestrian and Bicycle Crashes

Table 7 – 10

Bicycle Crashes by Geographic Location

Category	Total	Urban	Percent of Total	Rural	Percent of Total
Total Crashes	1,159	1,094	94.39%	65	5.61%
Fatal Crashes	47	43	91.49%	4	8.51%
Injury Crashes	1,112	1,051	94.51%	61	5.49%
Bicyclists Killed	48	43	89.58%	5	10.42%
Bicyclists Injured	1,128	1,067	94.59%	61	5.41%

Table 7 – 11

Bicycle Crash History

Year	Bicycle Crashes	Percent of all Crashes	Bicyclists Killed	Percent of all Fatalities	Bicyclists Injured	Percent of all Injuries
2018	1,291	1.01%	24	2.37%	1,196	2.23%
2019	1,282	0.98%	30	3.06%	1,265	2.32%
2020	833	0.84%	32	3.04%	816	1.96%
2021	1,032	0.85%	45	3.78%	1,010	1.95%
2022	1,159	0.97%	48	3.71%	1,128	2.15%

Table 7 – 12

Lighting Conditions in Bicycle Crashes

Type of Lighting Conditions	Number of Crashes		
	Total	Fatal	Injury
Daylight	875	22	853
Dawn	22	1	21
Dusk	46	4	42
Dark - Lighted	174	13	161
Dark - Not Lighted	37	4	33
Dark - Unknown Lighting	1	1	0
Unknown	4	2	2
TOTAL	1,159	47	1,112

Table 7 – 13

Weather Conditions in Bicycle Crashes

Type of Weather Conditions	Number of Crashes		
	Total	Fatal	Injury
Clear	1,062	42	1,020
Cloudy	74	1	73
Sleet/Hail	0	0	0
Rain	11	0	11
Snow or Blowing Snow	0	0	0
Severe Crosswinds	0	0	0
Blowing Sand, Soil, Dirt	0	0	0
Fog, Smog, Smoke	0	0	0
Other	0	0	0
Unknown	12	4	8
TOTAL	1,159	47	1,112

Section 7: – Pedestrian and Bicycle Crashes

Table 7 – 14
Pedestrian Crashes by County

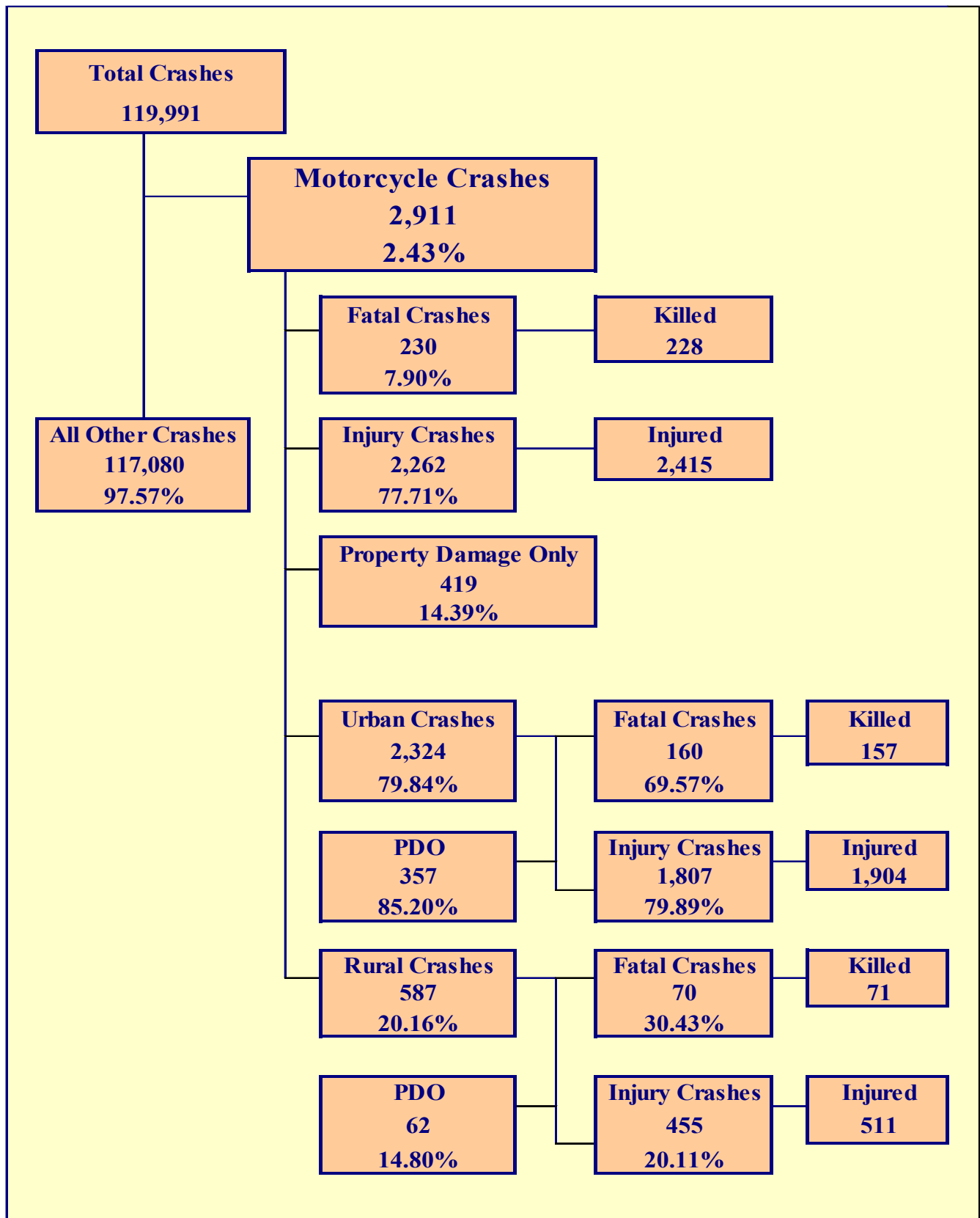
County	Number of Crashes			Number of Pedestrians	
	Total	Fatal	Injury	Killed	Injured
Apache	6	5	1	5	1
Cochise	22	5	17	5	17
Coconino	48	10	38	10	38
Gila	9	3	6	3	9
Graham	2	1	1	1	1
Greenlee	0	0	0	0	0
La Paz	2	1	1	1	1
Maricopa	1,365	185	1,180	184	1,243
Mohave	44	10	34	10	38
Navajo	16	4	12	4	13
Pima	262	61	201	61	210
Pinal	48	8	40	8	41
Santa Cruz	0	0	0	0	0
Yavapai	33	6	27	6	29
Yuma	31	4	27	4	28
TOTAL	1,888	303	1,585	302	1,669

Maricopa and Pima Counties accounted for 81.13% of pedestrian fatalities.

Table 7 – 15
Bicycle Crashes by County

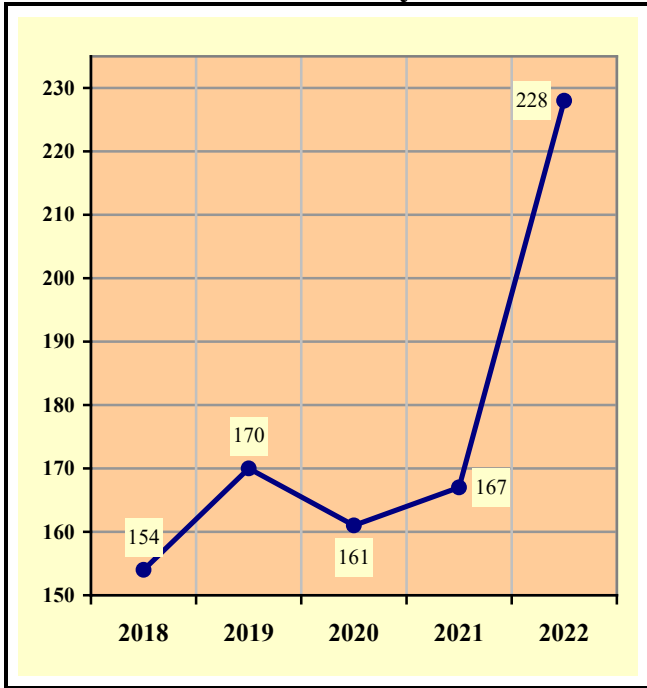
County	Number of Crashes			Number of Bicyclists	
	Total	Fatal	Injury	Killed	Injured
Apache	0	0	0	0	0
Cochise	12	1	11	1	11
Coconino	50	1	49	1	50
Gila	2	0	2	0	2
Graham	2	0	2	0	2
Greenlee	0	0	0	0	0
La Paz	0	0	0	0	0
Maricopa	807	35	772	35	780
Mohave	22	0	22	0	22
Navajo	3	0	3	0	3
Pima	159	9	150	10	155
Pinal	46	0	46	0	48
Santa Cruz	2	0	2	0	2
Yavapai	31	1	30	1	30
Yuma	23	0	23	0	23
TOTAL	1,159	47	1,112	48	1,128

Maricopa and Pima Counties accounted for 83.35% of bicycle crashes.



Section 8: – Motorcycle (MC) Crashes

**Chart 8 – 1
MC Fatalities by Year**

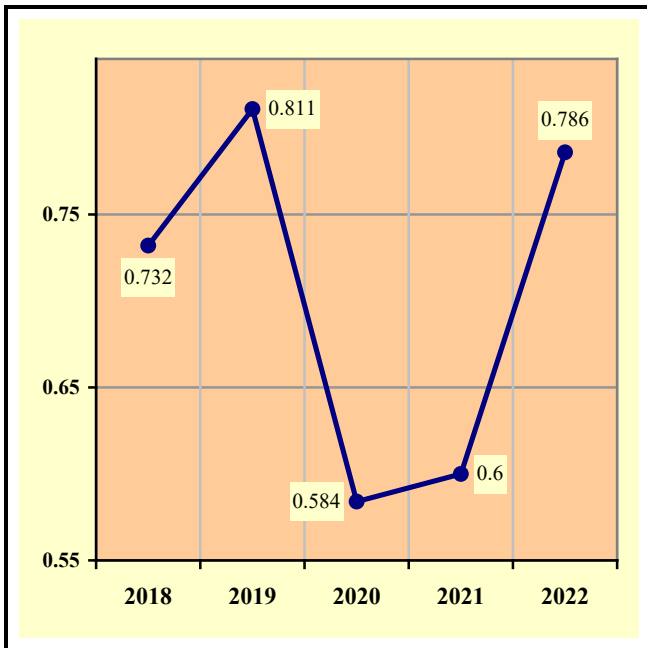


**Chart 8 – 2
MC Registrations in Arizona**

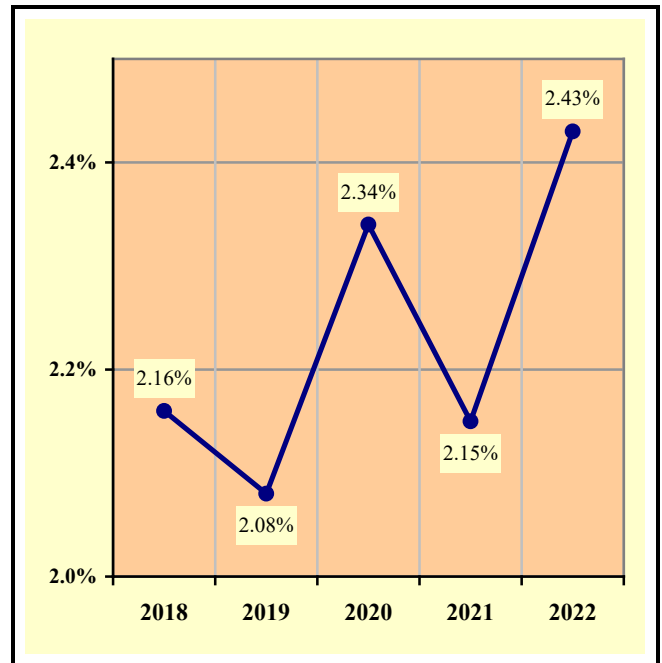


Total Point-in-Time of Registered Motorcycles at the end of
Calendar year 2022.
(Source: MVD - Currently Registered Vehicles by County Listing (motorcycle
sub category), reports dated 12/31/2022.)

**Chart 8 – 3
Fatality Rate per Registered MC**



**Chart 8 – 4
Percent of MC Crashes to All Crashes**



Section 8: – Motorcycle (MC) Crashes

Table 8 – 1
MC Crashes by First Harmful Event

First Harmful Event Type	Number of Crashes			
	Total	Fatal	Injury	PDO
Collision with Motor Vehicle in Transport	1,779	139	1,318	322
Overturning	487	31	427	29
Collision with Pedestrian	15	4	11	0
Collision with Bicyclist	10	2	8	0
Collision with Animal	26	2	21	3
Collision with Fixed Object	445	38	371	36
Collision with Non-fixed Object*	106	6	75	25
Vehicle Fire or Explosion	2	0	2	0
Other Non-collision**	33	0	29	4
Unknown	8	8	0	0
TOTAL	2,911	230	2,262	419
*Includes Collision with Parked Vehicles, Trains, Railway Vehicles, and Work Zone Equipment				
**Includes Vehicle Immersion, Jackknife, and Cargo Loss or Shift				

Table 8 – 2
Lighting Conditions in MC Crashes

Type of Lighting Conditions	Number of Crashes			
	Total	Fatal	Injury	PDO
Daylight	1,929	125	1,534	270
Dawn	32	2	27	3
Dusk	110	5	92	13
Dark - Lighted	646	63	473	110
Dark - Not Lighted	167	21	127	19
Dark - Unknown Lighting	8	3	3	2
Unknown	19	11	6	2
TOTAL	2,911	230	2,262	419

Table 8 – 3
Road Surface Conditions in MC Crashes

Type of Road Surface Condition	Number of Operators			
	Total	In Fatal Crashes	In Injury Crashes	In PDO Crashes
Dry	2,817	210	2,202	405
Wet	80	7	63	10
Snow/Slush	2	0	1	1
Ice/Frost	3	0	3	0
Water (standing or moving)	1	0	1	0
Mud, Dirt, Gravel, Sand	40	1	36	3
Other	5	0	5	0
Unknown	34	18	6	10
TOTAL	2,982	236	2,317	429

Section 8: – Motorcycle (MC) Crashes

Table 8 – 4

MC Crashes by Geographic Location

Category	Total	Urban	Percent of Total	Rural	Percent of Total
Total Crashes	2,911	2,324	79.84%	587	20.16%
Fatal Crashes	230	160	69.57%	70	30.43%
Injury Crashes	2,262	1,807	79.89%	455	20.11%
PDO Crashes	419	357	85.20%	62	14.80%
Persons Killed	228	157	68.86%	71	31.14%
Persons Injured	2,415	1,904	78.84%	511	21.16%

Table 8 – 5

Operator Involvement by Age in MC Crashes

Operator Age Group	Number of Operators							
	Total	Percent of Total	In Fatal Crashes	Percent of Fatal	In Injury Crashes	Percent of Injury	In PDO Crashes	Percent of PDO
15 & Under	30	1.01%	0	0.00%	26	1.12%	4	0.93%
16	11	0.37%	1	0.42%	9	0.39%	1	0.23%
17	33	1.11%	4	1.69%	23	0.99%	6	1.40%
18	54	1.81%	5	2.12%	41	1.77%	8	1.86%
19	92	3.09%	8	3.39%	70	3.02%	14	3.26%
20	79	2.65%	6	2.54%	61	2.63%	12	2.80%
21	81	2.72%	4	1.69%	64	2.76%	13	3.03%
22	94	3.15%	7	2.97%	78	3.37%	9	2.10%
23	73	2.45%	4	1.69%	62	2.68%	7	1.63%
24	72	2.41%	5	2.12%	60	2.59%	7	1.63%
25-34	696	23.34%	48	20.34%	567	24.47%	81	18.88%
35-44	479	16.06%	37	15.68%	367	15.84%	75	17.48%
45-54	472	15.83%	40	16.95%	379	16.36%	53	12.35%
55-64	373	12.51%	26	11.02%	299	12.90%	48	11.19%
65-74	199	6.67%	35	14.83%	146	6.30%	18	4.20%
75 & Older	51	1.71%	3	1.27%	44	1.90%	4	0.93%
Unknown	93	3.12%	3	1.27%	21	0.91%	69	16.08%
TOTAL	2,982	100.00%	236	100.00%	2,317	100.00%	429	100.00%

Table 8 – 6

MC Operator Physical Condition

Type of Condition	Number of Operators							
	Total	Percent of Total	In Fatal Crashes	Percent of Fatal	In Injury Crashes	Percent of Injury	In PDO Crashes	Percent of PDO
No Apparent Influence	2,446	82.03%	79	33.47%	2,025	87.40%	342	79.72%
Alcohol	114	3.82%	28	11.86%	72	3.11%	14	3.26%
Illegal Drugs	16	0.54%	13	5.51%	3	0.13%	0	0.00%
Medications	1	0.03%	0	0.00%	1	0.04%	0	0.00%
Marijuana	6	0.20%	6	2.54%	0	0.00%	0	0.00%
Illness or Physical Impairment	8	0.27%	1	0.42%	6	0.26%	1	0.23%
Fell Asleep or Fatigued	4	0.13%	0	0.00%	3	0.13%	1	0.23%
Other	6	0.20%	1	0.42%	3	0.13%	2	0.47%
Unknown	381	12.78%	108	45.76%	204	8.80%	69	16.08%
TOTAL	2,982	100.00%	236	100.00%	2,317	100.00%	429	100.00%

Section 8: – Motorcycle (MC) Crashes

Table 8 – 7

MC Operator’s Helmet Use

Severity of Injury	Helmet Used	Percent of Total	Helmet Not Used	Percent of Total	Unknown	Percent of Total	Total	Percent of Total
No Injury	203	12.84%	62	10.23%	182	22.89%	447	14.99%
Unknown Injury	18	1.14%	10	1.65%	31	3.90%	59	1.98%
Possible Injury	234	14.80%	75	12.38%	95	11.95%	404	13.55%
Suspected Minor Injury	691	43.71%	230	37.95%	293	36.86%	1,214	40.71%
Suspected Serious Injury	327	20.68%	155	25.58%	158	19.87%	640	21.46%
Fatal Injury	108	6.83%	74	12.21%	36	4.53%	218	7.31%
TOTALS	1,581	100.00%	606	100.00%	795	100.00%	2,982	100.00%

Table 8 – 8

MC Passenger’s Helmet Use

Severity of Injury	Helmet Used	Percent of Total	Helmet Not Used	Percent of Total	Unknown	Percent of Total	Total	Percent of Total
No Injury	8	8.70%	4	8.00%	9	18.37%	21	10.99%
Unknown Injury	1	1.09%	1	2.00%	1	2.04%	3	1.57%
Possible Injury	18	19.57%	7	14.00%	2	4.08%	27	14.14%
Suspected Minor Injury	40	43.48%	18	36.00%	20	40.82%	78	40.84%
Suspected Serious Injury	23	25.00%	14	28.00%	15	30.61%	52	27.23%
Fatal Injury	2	2.17%	6	12.00%	2	4.08%	10	5.24%
TOTALS	92	100.00%	50	100.00%	49	100.00%	191	100.00%

Table 8 – 9

Helmet Use by Gender

Gender	Number of Operators and Passengers							
	Helmet Used	Percent of Helmet Used	Helmet Not Used	Percent of Helmet Not Used	Helmet Use Unknown	Percent of Unknown	Total	Percent of Total
Male	1,485	88.76%	576	87.80%	712	84.36%	2,773	87.39%
Female	179	10.70%	78	11.89%	74	8.77%	331	10.43%
Unknown	9	0.54%	2	0.30%	58	6.87%	69	2.17%
TOTAL	1,673	100.00%	656	100.00%	844	100.00%	3,173	100.00%

Section 8: – Motorcycle (MC) Crashes

Table 8 – 10

MC Operators and Passengers Killed and Injured

Age of Victim	Persons Killed			Persons Injured			
	Total	Male	Female	Total	Male	Female	Gender Unknown
0-4	0	0	0	1	1	0	0
5-9	0	0	0	4	1	3	0
10-14	0	0	0	20	15	5	0
15-19	17	16	1	169	162	7	0
20-24	23	23	0	340	311	29	0
25-34	47	41	6	588	533	55	0
35-44	37	34	3	388	331	57	0
45-54	37	34	3	394	331	63	0
55-64	28	22	6	303	264	39	0
65-74	35	31	4	149	140	9	0
75 & Older	3	3	0	45	39	6	0
Unknown	1	1	0	14	10	0	4
TOTAL	228	205	23	2,415	2,138	273	4

Table 8 – 11

MC Operator Violations

Type of Violation or Behavior	Number of Operators							
	Total	Percent of Total	In Fatal Crashes	Percent of Fatal	In Injury Crashes	Percent of Injury	In PDO Crashes	Percent of PDO
No Improper Action	1,387	46.51%	58	24.58%	1,117	48.21%	212	49.42%
Speed too Fast for Conditions	618	20.72%	49	20.76%	507	21.88%	62	14.45%
Exceeded Lawful Speed	67	2.25%	18	7.63%	44	1.90%	5	1.17%
Failed to Yield Right-Of-Way	74	2.48%	6	2.54%	54	2.33%	14	3.26%
Followed Too Closely	74	2.48%	2	0.85%	55	2.37%	17	3.96%
Ran Stop Sign	20	0.67%	1	0.42%	16	0.69%	3	0.70%
Disregarded Traffic Signal	61	2.05%	12	5.08%	42	1.81%	7	1.63%
Made Improper Turn	14	0.47%	0	0.00%	10	0.43%	4	0.93%
Drove in Opposing Lane	0	0.00%	0	0.00%	0	0.00%	0	0.00%
Drove Left of Center Line	28	0.94%	7	2.97%	20	0.86%	1	0.23%
Passed in No-Passing Zone	8	0.27%	2	0.85%	5	0.22%	1	0.23%
Unsafe Lane Change	76	2.55%	6	2.54%	53	2.29%	17	3.96%
Failed to Keep in Proper Lane	105	3.52%	15	6.36%	79	3.41%	11	2.56%
Crossed Median	1	0.03%	0	0.00%	1	0.04%	0	0.00%
Aggressive Driving	10	0.34%	0	0.00%	6	0.26%	4	0.93%
Wrong Way Driving	3	0.10%	1	0.42%	1	0.04%	1	0.23%
Other	108	3.62%	11	4.66%	78	3.37%	19	4.43%
Unknown	328	11.00%	48	20.34%	229	9.88%	51	11.89%
TOTAL	2,982	100.00%	236	100.00%	2,317	100.00%	429	100.00%

Section 8: – Motorcycle (MC) Crashes

Chart 8 – 5

All MC Crashes vs. Fatal MC Crashes by Time of Day - Weekdays

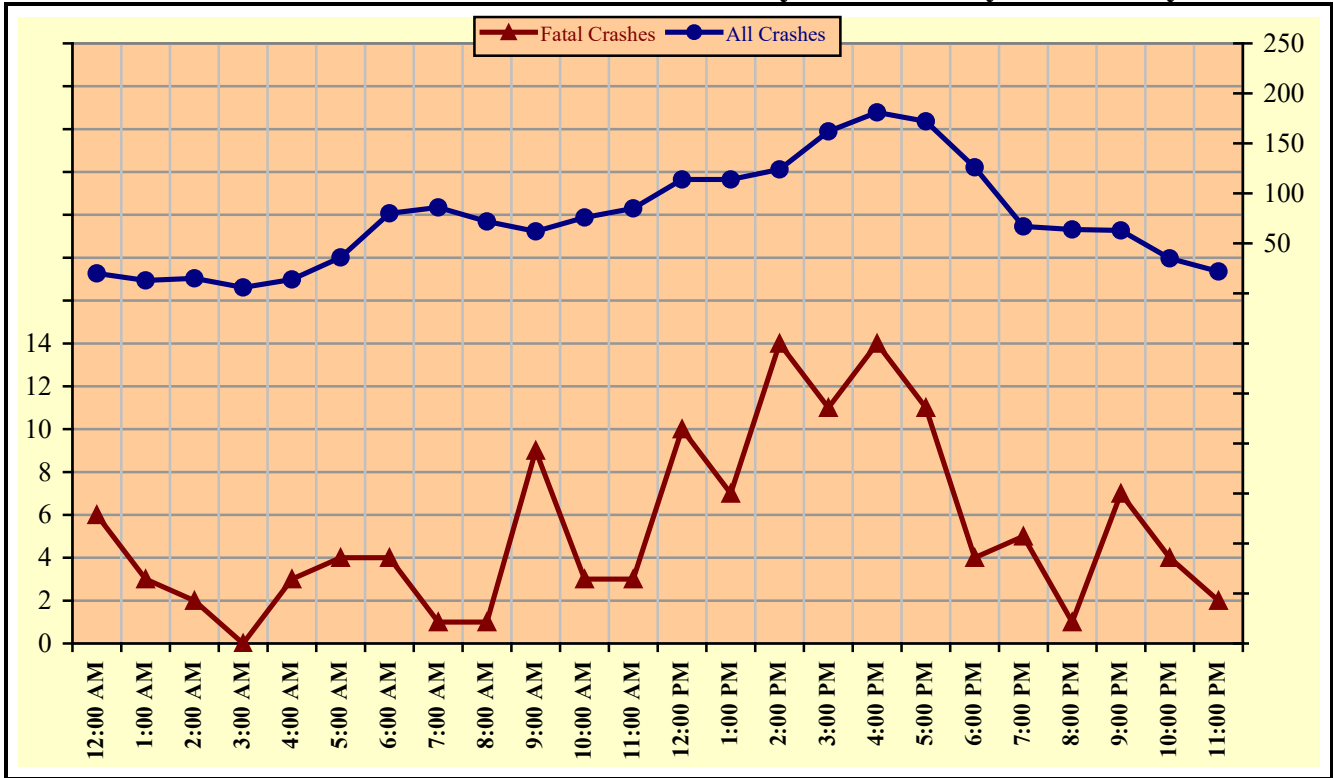
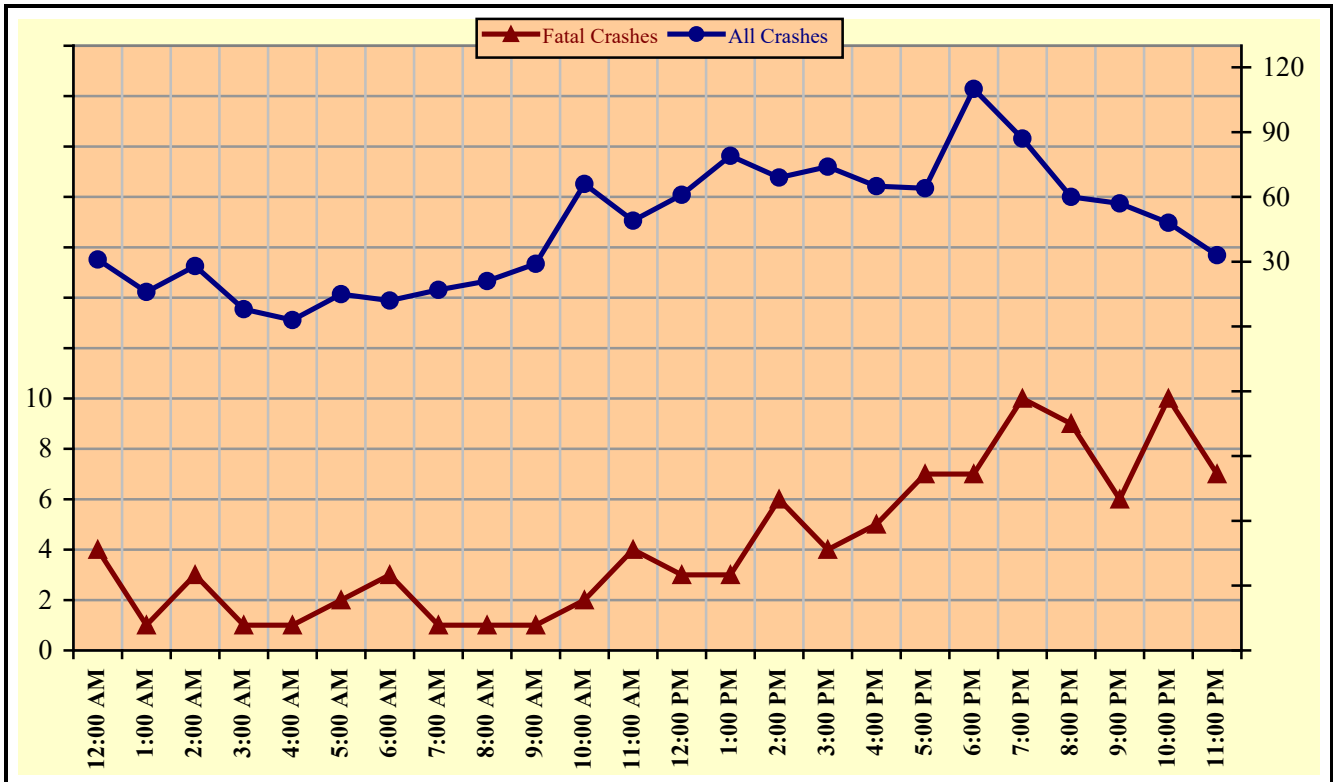


Chart 8 – 6

All MC Crashes vs. Fatal MC Crashes by Time of Day - Weekends



Section 8: – Motorcycle (MC) Crashes

Chart 8 – 7
All MC Crashes vs. Fatal MC Crashes by Day of Week

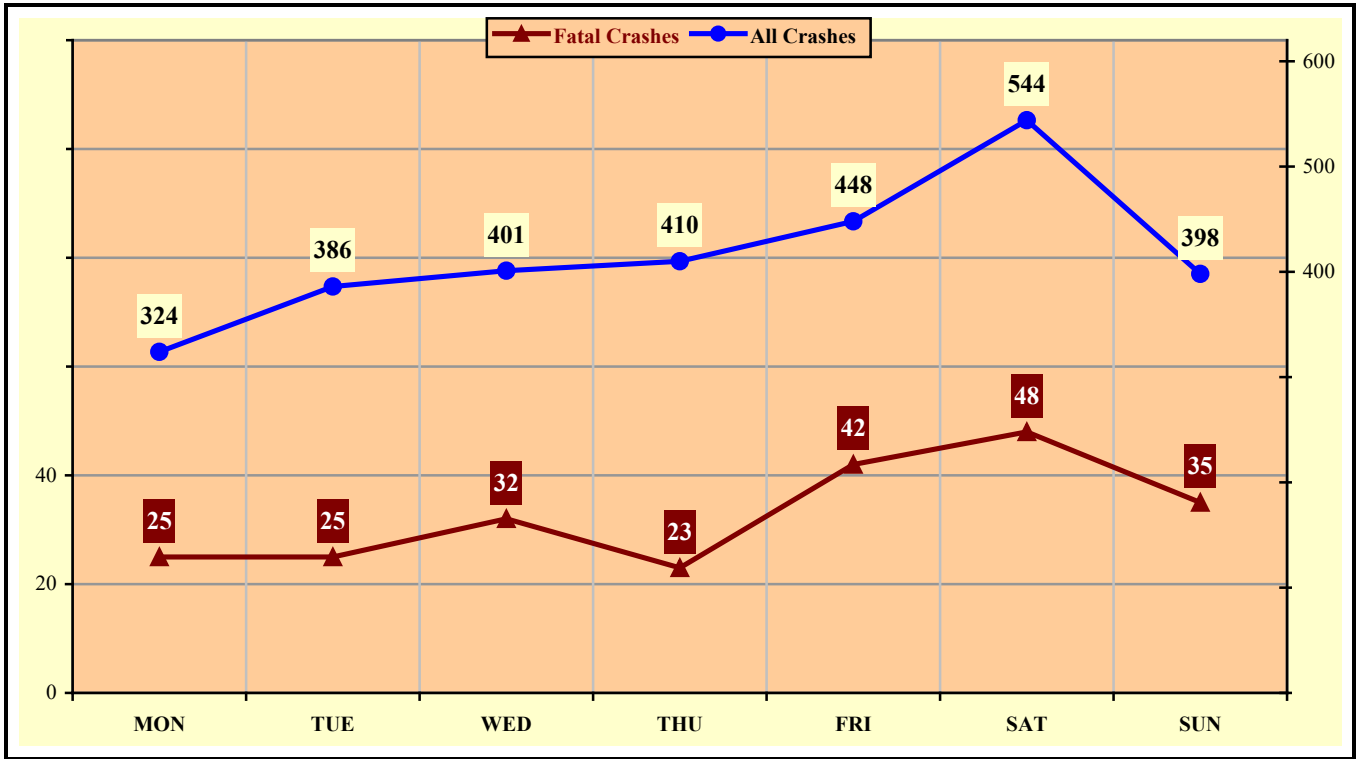
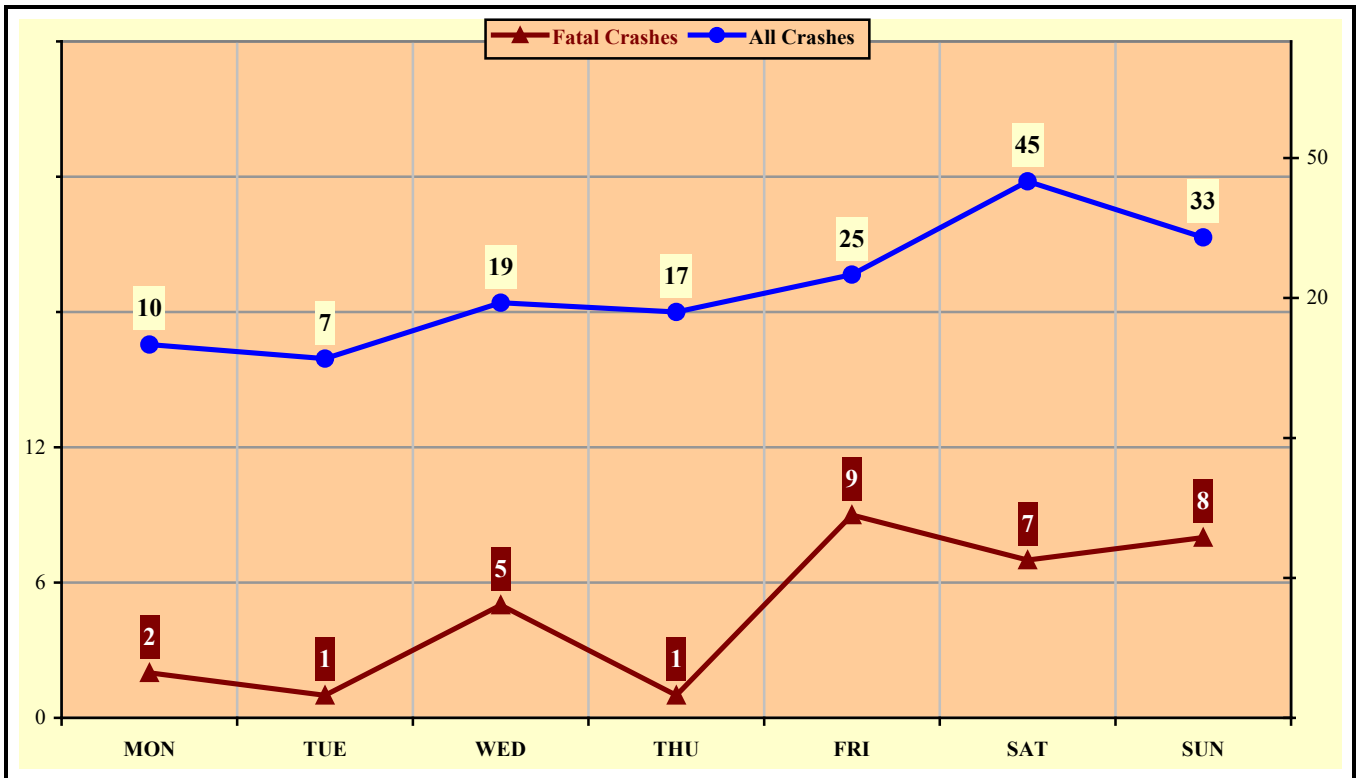


Chart 8 – 8
Alcohol Related MC Crashes vs. Fatal Alcohol Related MC Crashes by Day of Week



Section 8: – Motorcycle (MC) Crashes

Table 8 – 12
MC Crashes by Hour and Day of Week

Hour Beginning	Total Crashes		Monday		Tuesday		Wednesday		Thursday		Friday		Saturday		Sunday		Weekdays		Weekends	
	All	Fatal	All	Fatal	All	Fatal	All	Fatal	All	Fatal	All	Fatal	All	Fatal	All	Fatal	All	Fatal	All	Fatal
12:00 AM	51	10	2	0	6	1	4	0	4	2	6	3	14	2	15	2	20	6	31	4
1:00 AM	29	4	1	0	3	1	2	0	4	1	4	1	10	0	5	1	13	3	16	1
2:00 AM	43	5	3	0	2	1	3	0	3	0	7	1	15	1	10	2	15	2	28	3
3:00 AM	14	1	1	0	1	0	0	0	2	0	3	0	5	1	2	0	6	0	8	1
4:00 AM	17	4	1	0	9	2	2	0	1	0	2	1	1	1	1	0	14	3	3	1
5:00 AM	51	6	12	2	6	0	10	1	9	0	11	3	1	0	2	0	36	4	15	2
6:00 AM	92	7	11	1	16	0	18	1	21	2	14	0	11	3	1	0	80	4	12	3
7:00 AM	103	2	16	0	23	1	20	0	12	0	15	0	12	0	5	1	86	1	17	1
8:00 AM	93	2	13	0	17	1	14	0	20	0	8	0	12	1	9	0	72	1	21	1
9:00 AM	91	10	9	0	12	2	12	0	13	3	16	4	15	1	14	0	62	9	29	1
10:00 AM	142	5	11	1	15	0	16	2	19	0	15	0	31	1	35	1	76	3	66	2
11:00 AM	134	7	12	0	16	2	13	0	24	1	20	0	22	0	27	4	85	3	49	4
12:00 PM	175	13	20	2	21	1	32	2	15	1	26	4	31	0	30	3	114	10	61	3
1:00 PM	193	10	20	1	21	0	23	4	23	1	27	1	48	1	31	2	114	7	79	3
2:00 PM	193	20	18	3	29	2	27	2	21	3	29	4	38	3	31	3	124	14	69	6
3:00 PM	236	15	34	3	36	3	29	4	35	0	28	1	44	3	30	1	162	11	74	4
4:00 PM	246	19	28	4	36	1	37	4	37	2	43	3	35	1	30	4	181	14	65	5
5:00 PM	236	18	36	4	32	1	41	4	29	2	34	0	37	6	27	1	172	11	64	7
6:00 PM	236	11	23	1	27	2	36	1	40	0	43	2	44	3	23	2	126	4	110	7
7:00 PM	154	15	17	1	14	1	17	3	19	0	33	3	26	5	28	2	67	5	87	10
8:00 PM	124	10	10	0	16	1	22	0	16	0	29	6	20	0	11	3	64	1	60	9
9:00 PM	120	13	15	0	15	0	13	4	20	3	17	2	26	4	14	0	63	7	57	6
10:00 PM	83	14	4	1	7	2	6	0	18	1	12	3	27	4	9	3	35	4	48	10
11:00 PM	55	9	7	1	6	0	4	0	5	1	6	0	19	7	8	0	22	2	33	7
TOTAL	2,911	230	324	25	386	25	401	32	410	23	448	42	544	48	398	35	1,809	129	1,102	101

Crashes during Weekends accounted for 37.86% of all MC crashes and 43.91% of Fatal MC Crashes.

Section 8: – Motorcycle (MC) Crashes

Table 8 – 13

MC Crashes by County

County	Number of Crashes				Number of Persons	
	Total	Fatal	Injury	PDO	Killed	Injured
Apache	6	2	4	0	2	4
Cochise	46	3	38	5	3	41
Coconino	84	6	63	15	6	71
Gila	40	5	33	2	5	36
Graham	7	0	6	1	0	5
Greenlee	5	1	4	0	1	5
La Paz	13	1	9	3	1	10
Maricopa	1,906	134	1,473	299	132	1,560
Mohave	132	11	106	15	11	117
Navajo	19	3	12	4	3	15
Pima	293	25	236	32	24	248
Pinal	135	21	95	19	22	107
Santa Cruz	5	2	2	1	2	3
Yavapai	135	9	112	14	9	119
Yuma	85	7	69	9	7	74
TOTAL	2,911	230	2,262	419	228	2,415

Maricopa and Pima Counties accounted for 68.42% of MC fatalities.

Table 8 – 14

Manner of Collision in MC Crashes

Manner of Collision Type	Number of Crashes							
	Total	Percent of All Crashes	Fatal	Percent of Fatal Crashes	Injury	Percent of Injury Crashes	PDO	Percent of PDO Crashes
Angle	325	17.11%	30	19.23%	256	18.31%	39	11.30%
Left Turn	476	25.07%	57	36.54%	373	26.68%	46	13.33%
Rear End	529	27.86%	21	13.46%	374	26.75%	134	38.84%
Head-On	52	2.74%	11	7.05%	36	2.58%	5	1.45%
Sideswipe (same)	306	16.11%	8	5.13%	212	15.16%	86	24.93%
Sideswipe (opposite)	32	1.69%	3	1.92%	25	1.79%	4	1.16%
U-Turn	28	1.47%	8	5.13%	15	1.07%	5	1.45%
Other*	137	7.21%	17	10.90%	95	6.80%	25	7.25%
Unknown	14	0.74%	1	0.64%	12	0.86%	1	0.29%
TOTAL	1,899	100.00%	156	100.00%	1,398	100.00%	345	100.00%
Note: Includes only multi-unit MC crashes								
*Other includes pedestrian and bicycle crashes								

Acknowledgements

Special gratitude to our other providers of data and information including:

The Information Technology Group, Arizona Department of Transportation

Motor Vehicle Division, Arizona Department of Transportation

Multimodal Planning Division, Arizona Department of Transportation

The Federal Highway Administration, U.S. Department of Transportation

National Highway Transportation Safety Administration